

## Anti-Phospho-TOP2A-Thr1343 antibody (1311-1360 aa) (STJ90606)

### GENERAL INFORMATION

Product Type	Primary antibodies
Applications	WB/ELISA
Host / Source	Rabbit
Reactivity	Human/Rat/Mouse

### PRODUCT PROPERTIES

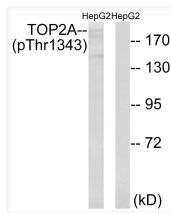
Clonality	Polyclonal
Concentration	1 mg/mL
Conjugation	Unconjugated
Purification	The antibody was affinity-purified from rabbit antiserum by affinity-chromatography using epitope-specific immunogen.
Dilution Range	WB 1:500-1:2000 ELISA 1:5000
Formulation	Liquid in PBS containing 50% Glycerol, 0.5% BSA and 0.02% Sodium Azide.
Isotype	IgG
Molecular Weight	Observed: 190kD
Storage Instruction	Store at -20°C for up to 1 year from the date of receipt, and avoid repeat freeze-thaw cycles.

### TARGET INFORMATION

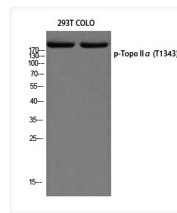
Gene ID	<a href="#">7153</a>
Gene Symbol	<a href="#">TOP2A</a>
UniProt ID	<a href="#">TOP2A_HUMAN</a>
Immunogen Region	1311-1360 aa
Specificity	Phospho-Topo II Alpha (T1343) Polyclonal Antibody detects endogenous levels of Topo II Alpha protein only when phosphorylated at T1343.

### ADDITIONAL INFORMATION

Note STRICTLY FOR FURTHER SCIENTIFIC RESEARCH USE ONLY (RUO). MUST NOT TO BE USED IN DIAGNOSTIC OR THERAPEUTIC APPLICATIONS.



Western blot analysis of lysates from HepG2 cells treated with Ca<sup>2+</sup> 40nM 30', using TOP2A (Phospho-Thr1343) Antibody. The lane on the right is blocked with the phospho peptide.



Western blot analysis of 293T COLO using Topo II Alpha (T1343) antibody. Antibody was diluted at 1:2000