

Anti-Phospho-VDR-Ser51 antibody (16-65 aa) (STJ90600)

GENERAL INFORMATION

Product Type	Primary antibodies
Applications	WB/IHC/IF/ELISA
Host / Source	Rabbit
Reactivity	Human/Mouse/Rat

PRODUCT PROPERTIES

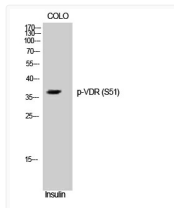
Clonality	Polyclonal
Concentration	1 mg/mL
Conjugation	Unconjugated
Purification	The antibody was affinity-purified from rabbit antiserum by affinity-chromatography using epitope-specific immunogen.
Dilution Range	WB 1:500-1:2000 IHC 1:100-1:300 ELISA 1:20000 IF 1:50-200
Formulation	Liquid in PBS containing 50% Glycerol, 0.5% BSA and 0.02% Sodium Azide.
Isotype	IgG
Molecular Weight	Observed: 38kD
Storage Instruction	Store at -20°C for up to 1 year from the date of receipt, and avoid repeat freeze-thaw cycles.

TARGET INFORMATION

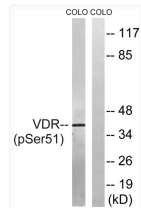
Gene ID	7421
Gene Symbol	VDR
UniProt ID	VDR_HUMAN
Immunogen Region	16-65 aa
Specificity	Phospho-VDR (S51) Polyclonal Antibody detects endogenous levels of VDR protein only when phosphorylated at S51.

ADDITIONAL INFORMATION

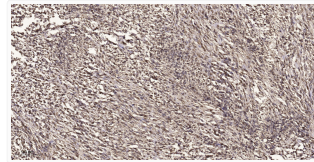
Note **STRICTLY FOR FURTHER SCIENTIFIC RESEARCH USE ONLY (RUO). MUST NOT TO BE USED IN DIAGNOSTIC OR THERAPEUTIC APPLICATIONS.**



Western blot analysis of COLO cells using Phospho-VDR (S51) Polyclonal Antibody on cells' nuclei extracted by Minute™ STJ90600



Western blot analysis of lysates from COLO205 cells treated with insulin 0.01U/ml for 15', using Vitamin D3 Receptor STJ90600



Immunohistochemical analysis of paraffin-embedded human small intestinal carcinoma tissue. 1, Primary antibody was STJ90600