

## Anti-Phospho-Rsk-1/2/3/4-Ser221/227/S218/232 antibody (191-240 aa) (STJ90596)

### GENERAL INFORMATION

Product Type	Primary antibodies
Applications	WB/ELISA
Host / Source	Rabbit
Reactivity	Human/Mouse

### PRODUCT PROPERTIES

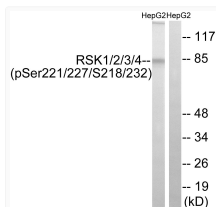
Clonality	Polyclonal
Concentration	1 mg/mL
Conjugation	Unconjugated
Purification	The antibody was affinity-purified from rabbit antiserum by affinity-chromatography using epitope-specific immunogen.
Dilution Range	WB 1:500-1:2000 ELISA 1:40000
Formulation	Liquid in PBS containing 50% Glycerol, 0.5% BSA and 0.02% Sodium Azide.
Isotype	IgG
Molecular Weight	Observed: 85kD
Storage Instruction	Store at -20°C for up to 1 year from the date of receipt, and avoid repeat freeze-thaw cycles.

### TARGET INFORMATION

Gene ID	<a href="#">6195</a> <a href="#">27330</a> <a href="#">6197</a> <a href="#">RPS6KA1</a> <a href="#">RPS6KA6</a> <a href="#">KS6A1_HUMAN</a> <a href="#">KS6A6_HUMAN</a> <a href="#">KS6A3_HUMAN</a>
Immunogen Region	191-240 aa
Specificity	Phospho-Rsk-1/2/3/4 (S221/227/S218/232) Polyclonal Antibody detects endogenous levels of Rsk-1/2/3/4 protein only when phosphorylated at S221/227/S218/232.

### ADDITIONAL INFORMATION

Note **STRICTLY FOR FURTHER SCIENTIFIC RESEARCH USE ONLY (RUO). MUST NOT TO BE USED IN DIAGNOSTIC OR THERAPEUTIC APPLICATIONS.**



Western blot analysis of lysates from HepG2 cells treated with EGF 200ng/ml 30', using RSK1/2/3/4 (Phospho-Ser221/227/S218/232) Antibody. The lane on the right is blocked with the phospho peptide.