

Anti-Phospho-MAP2K1-Thr386 antibody (344-393 aa) (STJ90585)

GENERAL INFORMATION

Product Type	Primary antibodies
Applications	WB/ELISA
Host / Source	Rabbit
Reactivity	Human/Mouse/Rat

PRODUCT PROPERTIES

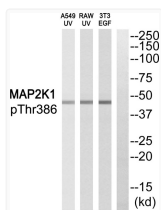
Clonality	Polyclonal
Concentration	1 mg/mL
Conjugation	Unconjugated
Purification	The antibody was affinity-purified from rabbit antiserum by affinity-chromatography using epitope-specific immunogen.
Dilution Range	WB 1:500-1:2000 ELISA 1:10000
Formulation	Liquid in PBS containing 50% Glycerol, 0.5% BSA and 0.02% Sodium Azide.
Isotype	IgG
Molecular Weight	Observed: 45kD
Storage Instruction	Store at -20°C for up to 1 year from the date of receipt, and avoid repeat freeze-thaw cycles.

TARGET INFORMATION

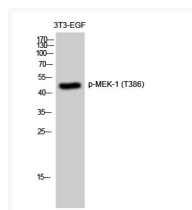
Gene ID	5604
Gene Symbol	MAP2K1
UniProt ID	MP2K1_HUMAN
Immunogen Region	344-393 aa
Specificity	Phospho-MEK-1 (T386) Polyclonal Antibody detects endogenous levels of MEK-1 protein only when phosphorylated at T386.

ADDITIONAL INFORMATION

Note **STRICTLY FOR FURTHER SCIENTIFIC RESEARCH USE ONLY (RUO). MUST NOT TO BE USED IN DIAGNOSTIC OR THERAPEUTIC APPLICATIONS.**



Western blot analysis of MAP2K1 (Phospho-Thr386) Antibody. The lane on the right is blocked with the MAP2K1 (Phospho-Thr386) peptide.



Western blot analysis of 3T3-EGF cells using Phospho-MEK-1 (T386) Polyclonal Antibody diluted at 1 : 2000