

Anti-Phospho-CILK1-Tyr159 antibody (125-174 aa) (STJ90581)

GENERAL INFORMATION

Product Type	Primary antibodies
Applications	WB/ELISA/IHC
Host / Source	Rabbit
Reactivity	Human/Mouse/Rat

PRODUCT PROPERTIES

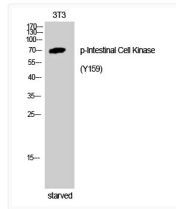
Clonality	Polyclonal
Concentration	1 mg/mL
Conjugation	Unconjugated
Purification	The antibody was affinity-purified from rabbit antiserum by affinity-chromatography using epitope-specific immunogen.
Dilution Range	WB 1:500-2000 IHC-P 1:50-300 ELISA 2000-20000
Formulation	Liquid in PBS containing 50% Glycerol, 0.5% BSA and 0.02% Sodium Azide.
Isotype	IgG
Molecular Weight	Observed: 71kD
Storage Instruction	Store at -20°C for up to 1 year from the date of receipt, and avoid repeat freeze-thaw cycles.

TARGET INFORMATION

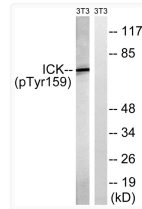
Gene ID	22858
Gene Symbol	CILK1
UniProt ID	CILK1_HUMAN
Immunogen Region	125-174 aa
Specificity	Phospho-Intestinal Cell Kinase (Y159) Polyclonal Antibody detects endogenous levels of Intestinal Cell Kinase protein only when phosphorylated at Y159.

ADDITIONAL INFORMATION

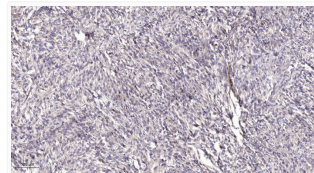
Note **STRICTLY FOR FURTHER SCIENTIFIC RESEARCH USE ONLY (RUO). MUST NOT TO BE USED IN DIAGNOSTIC OR THERAPEUTIC APPLICATIONS.**



Western blot analysis of 3T3 cells using Phospho-Intestinal Cell Kinase (Y159) Polyclonal Antibody STJ90581



Western blot analysis of lysates from NIH/3T3 cells starved for 24h, using ICK (Phospho-Tyr159) Antibody. The lane on STJ90581



Immunohistochemical analysis of paraffin-embedded human colon cancer. 1, Antibody was diluted at 1:200 (4°C overnight). STJ90581