

Anti-Phospho-NTRK1-Tyr680/Y681 antibody (646-695 aa) (STJ90578)

GENERAL INFORMATION

Product Type	Primary antibodies
Applications	WB/ELISA
Host / Source	Rabbit
Reactivity	Human/Mouse/Rat

PRODUCT PROPERTIES

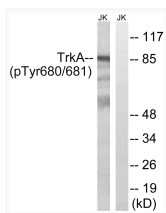
Clonality	Polyclonal
Concentration	1 mg/mL
Conjugation	Unconjugated
Purification	The antibody was affinity-purified from rabbit antiserum by affinity-chromatography using epitope-specific immunogen.
Dilution Range	WB 1:500-1:2000 ELISA 1:5000
Formulation	Liquid in PBS containing 50% Glycerol, 0.5% BSA and 0.02% Sodium Azide.
Isotype	IgG
Molecular Weight	Observed: 140-180kD
Storage Instruction	Store at -20°C for up to 1 year from the date of receipt, and avoid repeat freeze-thaw cycles.

TARGET INFORMATION

Gene ID	4914
Gene Symbol	NTRK1
UniProt ID	NTRK1_HUMAN
Immunogen Region	646-695 aa
Specificity	Phospho-Trk A (Y680/Y681) Polyclonal Antibody detects endogenous levels of Trk A protein only when phosphorylated at Y680/Y681.

ADDITIONAL INFORMATION

Note STRICTLY FOR FURTHER SCIENTIFIC RESEARCH USE ONLY (RUO). MUST NOT TO BE USED IN DIAGNOSTIC OR THERAPEUTIC APPLICATIONS.



Western blot analysis of lysates from Jurkat cells treated with starved 24h, using Trk A (Phospho-Tyr680+Tyr681) Antibody. The lane on the right is blocked with the phospho peptide.