

Anti-Phospho-CASP8-Tyr380 antibody (346-395 aa) (STJ90563)

GENERAL INFORMATION

Product Type	Primary antibodies
Applications	WB/ELISA
Host / Source	Rabbit
Reactivity	Human/Rat/Mouse

PRODUCT PROPERTIES

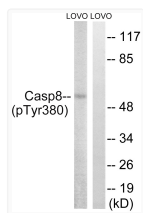
Clonality	Polyclonal
Concentration	1 mg/mL
Conjugation	Unconjugated
Purification	The antibody was affinity-purified from rabbit antiserum by affinity-chromatography using epitope-specific immunogen.
Dilution Range	WB 1:500-1:2000 ELISA 1:10000
Formulation	Liquid in PBS containing 50% Glycerol, 0.5% BSA and 0.02% Sodium Azide.
Isotype	IgG
Molecular Weight	Observed: 55kD
Storage Instruction	Store at -20°C for up to 1 year from the date of receipt, and avoid repeat freeze-thaw cycles.

TARGET INFORMATION

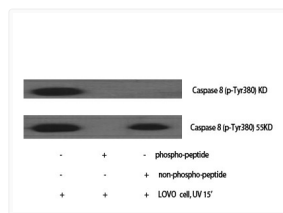
Gene ID	841
Gene Symbol	CASP8
UniProt ID	CASP8_HUMAN
Immunogen Region	346-395 aa
Specificity	Phospho-Caspase-8 (Y380) Polyclonal Antibody detects endogenous levels of Caspase-8 protein only when phosphorylated at Y380.

ADDITIONAL INFORMATION

Note STRICTLY FOR FURTHER SCIENTIFIC RESEARCH USE ONLY (RUO). MUST NOT TO BE USED IN DIAGNOSTIC OR THERAPEUTIC APPLICATIONS.



Western blot analysis of lysates from LOVO cells treated with UV 15', using Caspase 8 (Phospho-Tyr380) Antibody. The lane on the right is blocked with the phospho peptide.



Western blot analysis of various cells using Phospho-Caspase-8 (Y380) Polyclonal Antibody