

Anti-Phospho-CSNK1A1-Thr321 antibody (287-336 aa) (STJ90552)

GENERAL INFORMATION

Product Type	Primary antibodies
Applications	WB/IHC/IF/ELISA
Host / Source	Rabbit
Reactivity	Human/Mouse/Rat

PRODUCT PROPERTIES

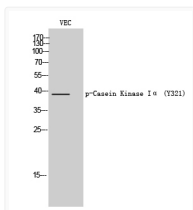
Clonality	Polyclonal
Concentration	1 mg/mL
Conjugation	Unconjugated
Purification	The antibody was affinity-purified from rabbit antiserum by affinity-chromatography using epitope-specific immunogen.
Dilution Range	WB 1:500-1:2000 IHC 1:100-1:300 ELISA 1:5000 IF 1:50-200
Formulation	Liquid in PBS containing 50% Glycerol, 0.5% BSA and 0.02% Sodium Azide.
Isotype	IgG
Molecular Weight	Observed: 35kD
Storage Instruction	Store at -20°C for up to 1 year from the date of receipt, and avoid repeat freeze-thaw cycles.

TARGET INFORMATION

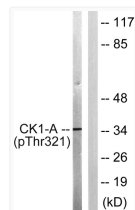
Gene ID	1452
Gene Symbol	CSNK1A1
UniProt ID	KC1A_HUMAN
Immunogen Region	287-336 aa
Specificity	Phospho-Casein Kinase I Alpha (Y321) Polyclonal Antibody detects endogenous levels of Casein Kinase I Alpha protein only when phosphorylated at Y321.

ADDITIONAL INFORMATION

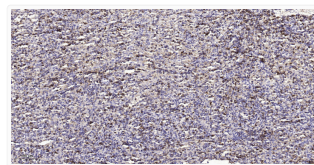
Note **STRICTLY FOR FURTHER SCIENTIFIC RESEARCH USE ONLY (RUO). MUST NOT TO BE USED IN DIAGNOSTIC OR THERAPEUTIC APPLICATIONS.**



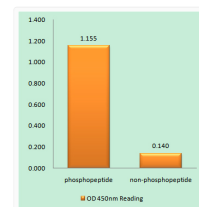
Western blot analysis of VEC cells using Phospho-Casein Kinase Iα (Y321) Polyclonal Antibody STJ90552



Western blot analysis of lysates from HUVEC cells, using Casein Kinase I alpha (Phospho-Tyr321) Antibody. The lane on STJ90552



Immunohistochemical analysis of paraffin-embedded human spleen tissue. 1, Primary antibody was diluted at 1:200 (4°C STJ90552



Enzyme-Linked Immunosorbent Assay (Phospho-ELISA) for Immunogen Phosphopeptide (Phospho-left) and Non-Phosphopeptide (Phospho-right) STJ90552