

Anti-Phospho-ZC3HC1-Ser354 antibody (320-369 aa) (STJ90545)

GENERAL INFORMATION

| | |
|---------------|------------------------|
| Product Type | Primary antibodies |
| Applications | WB/IF/ELISA |
| Host / Source | Rabbit |
| Reactivity | Human/Mouse/Rat/Monkey |

PRODUCT PROPERTIES

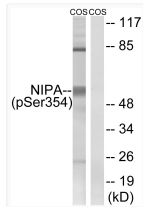
| | |
|---------------------|---|
| Clonality | Polyclonal |
| Concentration | 1 mg/mL |
| Conjugation | Unconjugated |
| Purification | The antibody was affinity-purified from rabbit antiserum by affinity-chromatography using epitope-specific immunogen. |
| Dilution Range | WB 1:500-1:2000 IF 1:200-1:1000 ELISA 1:40000 |
| Formulation | Liquid in PBS containing 50% Glycerol, 0.5% BSA and 0.02% Sodium Azide. |
| Isotype | IgG |
| Molecular Weight | Observed: 55kD |
| Storage Instruction | Store at -20°C for up to 1 year from the date of receipt, and avoid repeat freeze-thaw cycles. |

TARGET INFORMATION

| | |
|------------------|---|
| Gene ID | 51530 |
| Gene Symbol | ZC3HC1 |
| UniProt ID | ZC3C1_HUMAN |
| Immunogen Region | 320-369 aa |
| Specificity | Phospho-NIPA (S354) Polyclonal Antibody detects endogenous levels of NIPA protein only when phosphorylated at S354. |

ADDITIONAL INFORMATION

Note STRICTLY FOR FURTHER SCIENTIFIC RESEARCH USE ONLY (RUO). MUST NOT TO BE USED IN DIAGNOSTIC OR THERAPEUTIC APPLICATIONS.



Western blot analysis of lysates from COS7 cells treated with HU 2nM 24h, using NIPA (Phospho-Ser354) Antibody. The lane on the right is blocked with the phospho peptide.