

## Anti-Phospho-LEF1-Ser42 antibody (8-57 aa) (STJ90534)

### GENERAL INFORMATION

Product Type	Primary antibodies
Applications	WB/IHC
Host / Source	Rabbit
Reactivity	Human/Mouse/Rat

### PRODUCT PROPERTIES

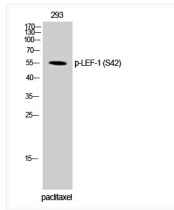
Clonality	Polyclonal
Concentration	1 mg/mL
Conjugation	Unconjugated
Purification	The antibody was affinity-purified from rabbit antiserum by affinity-chromatography using epitope-specific immunogen.
Dilution Range	WB 1:500-2000 IHC-P 1:50-300
Formulation	Liquid in PBS containing 50% Glycerol, 0.5% BSA and 0.02% Sodium Azide.
Isotype	IgG
Molecular Weight	Observed: 55kD
Storage Instruction	Store at -20°C for up to 1 year from the date of receipt, and avoid repeat freeze-thaw cycles.

### TARGET INFORMATION

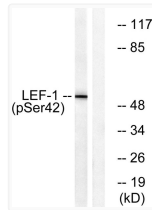
Gene ID	<a href="#">51176</a>
Gene Symbol	<a href="#">LEF1</a>
UniProt ID	<a href="#">LEF1_HUMAN</a>
Immunogen Region	8-57 aa
Specificity	Phospho-LEF-1 (S42) Polyclonal Antibody detects endogenous levels of LEF-1 protein only when phosphorylated at S42.

### ADDITIONAL INFORMATION

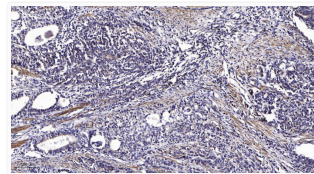
Note STRICTLY FOR FURTHER SCIENTIFIC RESEARCH USE ONLY (RUO). MUST NOT TO BE USED IN DIAGNOSTIC OR THERAPEUTIC APPLICATIONS.



Western blot analysis of 293 cells using Phospho-LEF-1 (S42) Polyclonal Antibody STJ90534



Western blot analysis of lysates from 293 cells treated with paclitaxel 1  $\mu$ M 24 h, using LEF-1 (Phospho-Ser42) STJ90534



Immunohistochemical analysis of paraffin-embedded human gastric adenocarcinoma. 1. Antibody was diluted at 1:200 (4° STJ90534)