

## Anti-Phospho-IL2RB-Tyr364 antibody (331-380 aa) (STJ90529)

### GENERAL INFORMATION

Product Type	Primary antibodies
Applications	WB/IF/ELISA
Host / Source	Rabbit
Reactivity	Human/Mouse/Rat

### PRODUCT PROPERTIES

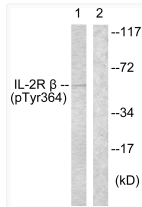
Clonality	Polyclonal
Concentration	1 mg/mL
Conjugation	Unconjugated
Purification	The antibody was affinity-purified from rabbit antiserum by affinity-chromatography using epitope-specific immunogen.
Dilution Range	WB 1:500-1:2000 IF 1:200-1:1000 ELISA 1:10000
Formulation	Liquid in PBS containing 50% Glycerol, 0.5% BSA and 0.02% Sodium Azide.
Isotype	IgG
Molecular Weight	Observed: 61kD
Storage Instruction	Store at -20°C for up to 1 year from the date of receipt, and avoid repeat freeze-thaw cycles.

### TARGET INFORMATION

Gene ID	<a href="#">3560</a>
Gene Symbol	<a href="#">IL2RB</a>
UniProt ID	<a href="#">IL2RB_HUMAN</a>
Immunogen Region	331-380 aa
Specificity	Phospho-IL-2R Beta (Y364) Polyclonal Antibody detects endogenous levels of IL-2R Beta protein only when phosphorylated at Y364.

### ADDITIONAL INFORMATION

Note STRICTLY FOR FURTHER SCIENTIFIC RESEARCH USE ONLY (RUO). MUST NOT TO BE USED IN DIAGNOSTIC OR THERAPEUTIC APPLICATIONS.



Western blot analysis of lysates from HeLa cells, using IL-2R beta (Phospho-Tyr364) Antibody. The lane on the right is blocked with the phospho peptide.