

Anti-Phospho-SMAD3-Ser204 antibody (170-219 aa) (STJ90523)

GENERAL INFORMATION

Product Type	Primary antibodies
Applications	WB/IHC/IF/ELISA
Host / Source	Rabbit
Reactivity	Human/Mouse/Rat

PRODUCT PROPERTIES

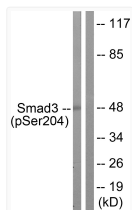
Clonality	Polyclonal
Concentration	1 mg/mL
Conjugation	Unconjugated
Purification	The antibody was affinity-purified from rabbit antiserum by affinity-chromatography using epitope-specific immunogen.
Dilution Range	WB 1:500-1:2000 IHC 1:100-1:300 IF 1:200-1:1000 ELISA 1:20000
Formulation	Liquid in PBS containing 50% Glycerol, 0.5% BSA and 0.02% Sodium Azide.
Isotype	IgG
Molecular Weight	Observed: 48kD
Storage Instruction	Store at -20°C for up to 1 year from the date of receipt, and avoid repeat freeze-thaw cycles.

TARGET INFORMATION

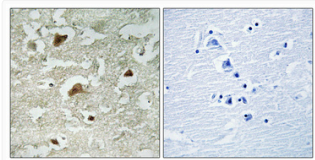
Gene ID	4088
Gene Symbol	SMAD3
UniProt ID	SMAD3_HUMAN
Immunogen Region	170-219 aa
Specificity	Phospho-Smad3 (S204) Polyclonal Antibody detects endogenous levels of Smad3 protein only when phosphorylated at S204.

ADDITIONAL INFORMATION

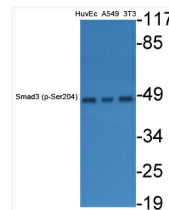
Note **STRICTLY FOR FURTHER SCIENTIFIC RESEARCH USE ONLY (RUO). MUST NOT TO BE USED IN DIAGNOSTIC OR THERAPEUTIC APPLICATIONS.**



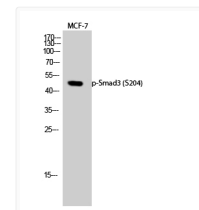
Western blot analysis of lysates from NIH/3T3 cells treated with Serum 20% 15', using Smad3 (Phospho-Ser204) Antibody. The lane on the right is blocked with the phospho peptide.



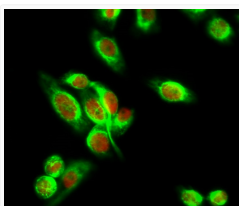
Immunohistochemical analysis of paraffin-embedded Human brain. Antibody was diluted at 1:100 (4°C overnight). High-pressure and temperature Tris-EDTA, pH8.0 was used for antigen retrieval. Negative control (right) obtained from antibody was pre-absorbed by immunogen peptide.



Western blot analysis of various cells using Phospho-Smad3 (S204) Polyclonal Antibody diluted at 1: 500



Western blot analysis of MCF-7 cells using Phospho-Smad3 (S204) Polyclonal Antibody diluted at 1: 500



Immunofluorescence analysis of HeLa cell. 1, Smad3 (phospho Ser204) Polyclonal Antibody (red) was diluted at 1:200 (4°C overnight). LC3A mouse monoclonal antibody (5G10) (green) was diluted at 1:200 (4°C overnight). 2, Goat Anti Rabbit Alexa Fluor 594 Catalog: (NA) was diluted at 1:1000 (room temperature, 50min). Goat Anti Mouse Alexa Fluor 488 Catalog: (NA) was diluted at 1:1000 (room temperature, 50min).