

Anti-Phospho-CDKN1B-Thr198 antibody (149-198 aa) (STJ90519)

GENERAL INFORMATION

Product Type	Primary antibodies
Applications	WB/ELISA
Host / Source	Rabbit
Reactivity	Human/Rat/Mouse

PRODUCT PROPERTIES

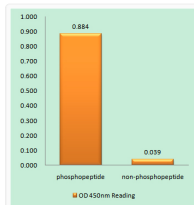
Clonality	Polyclonal
Concentration	1 mg/mL
Conjugation	Unconjugated
Purification	The antibody was affinity-purified from rabbit antiserum by affinity-chromatography using epitope-specific immunogen.
Dilution Range	WB 1:500-1:2000 ELISA 1:20000
Formulation	Liquid in PBS containing 50% Glycerol, 0.5% BSA and 0.02% Sodium Azide.
Isotype	IgG
Molecular Weight	Observed: 27kD
Storage Instruction	Store at -20°C for up to 1 year from the date of receipt, and avoid repeat freeze-thaw cycles.

TARGET INFORMATION

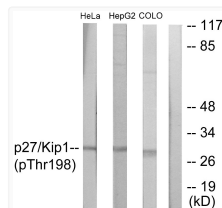
Gene ID	1027
Gene Symbol	CDKN1B
UniProt ID	CDN1B_HUMAN
Immunogen Region	149-198 aa
Specificity	Phospho-p27 (T198) Polyclonal Antibody detects endogenous levels of p27 protein only when phosphorylated at T198.

ADDITIONAL INFORMATION

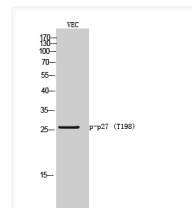
Note **STRICTLY FOR FURTHER SCIENTIFIC RESEARCH USE ONLY (RUO). MUST NOT TO BE USED IN DIAGNOSTIC OR THERAPEUTIC APPLICATIONS.**



Enzyme-Linked Immunosorbent Assay (Phospho-ELISA) for Immunogen Phosphopeptide (Phospho-left) and Non-Phosphopeptide (Phospho-right), using p27 Kip1 (Phospho-Thr198) Antibody



Western blot analysis of lysates from HeLa cells, HepG2 cells and COLO cells, using p27 Kip1 (Phospho-Thr198) Antibody. The lane on the right is blocked with the phospho peptide.



Western blot analysis of VEC cells using Phospho-p27 (T198) Polyclonal Antibody