

## Anti-Phospho-EFNB1-Tyr317 antibody (283-332 aa) (STJ90516)

### GENERAL INFORMATION

Product Type	Primary antibodies
Applications	WB/ELISA
Host / Source	Rabbit
Reactivity	Human/Mouse/Rat

### PRODUCT PROPERTIES

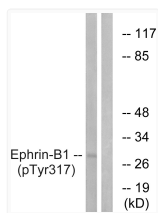
Clonality	Polyclonal
Concentration	1 mg/mL
Conjugation	Unconjugated
Purification	The antibody was affinity-purified from rabbit antiserum by affinity-chromatography using epitope-specific immunogen.
Dilution Range	WB 1:500-1:2000 ELISA 1:20000
Formulation	Liquid in PBS containing 50% Glycerol, 0.5% BSA and 0.02% Sodium Azide.
Isotype	IgG
Molecular Weight	Observed: 30kD
Storage Instruction	Store at -20°C for up to 1 year from the date of receipt, and avoid repeat freeze-thaw cycles.

### TARGET INFORMATION

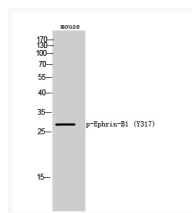
Gene ID	<a href="#">1947</a>
Gene Symbol	<a href="#">EFNB1</a>
UniProt ID	<a href="#">EFNB1_HUMAN</a>
Immunogen Region	283-332 aa
Specificity	Phospho-Ephrin-B1 (Y317) Polyclonal Antibody detects endogenous levels of Ephrin-B1 protein only when phosphorylated at Y317.

### ADDITIONAL INFORMATION

Note **STRICTLY FOR FURTHER SCIENTIFIC RESEARCH USE ONLY (RUO). MUST NOT TO BE USED IN DIAGNOSTIC OR THERAPEUTIC APPLICATIONS.**



Western blot analysis of lysates from mouse brain, using EFNB1 (Phospho-Tyr317) Antibody. The lane on the right is blocked with the phospho peptide.



Western blot analysis of mouse cells using Phospho-Ephrin-B1 (Y317) Polyclonal Antibody