

Anti-Phospho-EGFR-Tyr1069 antibody (1041-1090 aa) (STJ90515)

GENERAL INFORMATION

Product Type	Primary antibodies
Applications	WB/ELISA
Host / Source	Rabbit
Reactivity	Human/Mouse/Rat/Monkey

PRODUCT PROPERTIES

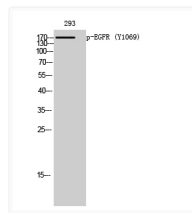
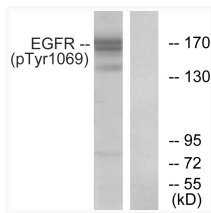
Clonality	Polyclonal
Concentration	1 mg/mL
Conjugation	Unconjugated
Purification	The antibody was affinity-purified from rabbit antiserum by affinity-chromatography using epitope-specific immunogen.
Dilution Range	WB 1:500-1:2000 ELISA 1:20000
Formulation	Liquid in PBS containing 50% Glycerol, 0.5% BSA and 0.02% Sodium Azide.
Isotype	IgG
Molecular Weight	Observed: 175kD
Storage Instruction	Store at -20°C for up to 1 year from the date of receipt, and avoid repeat freeze-thaw cycles.

TARGET INFORMATION

Gene ID	1956
Gene Symbol	EGFR
UniProt ID	EGFR_HUMAN
Immunogen Region	1041-1090 aa
Specificity	Phospho-EGFR (Y1069) Polyclonal Antibody detects endogenous levels of EGFR protein only when phosphorylated at Y1069.

ADDITIONAL INFORMATION

Note **STRICTLY FOR FURTHER SCIENTIFIC RESEARCH USE ONLY (RUO). MUST NOT TO BE USED IN DIAGNOSTIC OR THERAPEUTIC APPLICATIONS.**



Western blot analysis of lysates from COS7 cells treated with EGF 200ng/ml 30', using EGFR (Phospho-Tyr1069) Antibody. The lane on the right is blocked with the phospho peptide.

Western blot analysis of 293 cells using Phospho-EGFR (Y1069) Polyclonal Antibody diluted at 1:1000. The lane on the right is blocked with the phospho peptide.