

Anti-Phospho-ICAM3-Ser518 antibody (484-533 aa) (STJ90510)

GENERAL INFORMATION

Product Type	Primary antibodies
Applications	WB/ELISA
Host / Source	Rabbit
Reactivity	Human/Rat/Mouse

PRODUCT PROPERTIES

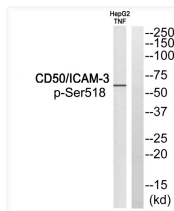
Clonality	Polyclonal
Concentration	1 mg/mL
Conjugation	Unconjugated
Purification	The antibody was affinity-purified from rabbit antiserum by affinity-chromatography using epitope-specific immunogen.
Dilution Range	WB 1:500-1:2000 ELISA 1:40000
Formulation	Liquid in PBS containing 50% Glycerol, 0.5% BSA and 0.02% Sodium Azide.
Isotype	IgG
Molecular Weight	Observed: 42-60kD
Storage Instruction	Store at -20°C for up to 1 year from the date of receipt, and avoid repeat freeze-thaw cycles.

TARGET INFORMATION

Gene ID	3385
Gene Symbol	ICAM3
UniProt ID	ICAM3_HUMAN
Immunogen Region	484-533 aa
Specificity	Phospho-CD50 (S518) Polyclonal Antibody detects endogenous levels of CD50 protein only when phosphorylated at S518.

ADDITIONAL INFORMATION

Note STRICTLY FOR FURTHER SCIENTIFIC RESEARCH USE ONLY (RUO). MUST NOT TO BE USED IN DIAGNOSTIC OR THERAPEUTIC APPLICATIONS.



Western blot analysis of CD50/ICAM-3 (Phospho-Ser518) Antibody. The lane on the right is blocked with the CD50/ICAM-3 (Phospho-Ser518) peptide.