

## Anti-Phospho-AKT1-Tyr326 antibody (292-341 aa) (STJ90503)

### GENERAL INFORMATION

Product Type	Primary antibodies
Applications	WB/ELISA
Host / Source	Rabbit
Reactivity	Human/Mouse/Rat

### PRODUCT PROPERTIES

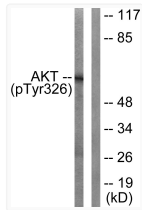
Clonality	Polyclonal
Concentration	1 mg/mL
Conjugation	Unconjugated
Purification	The antibody was affinity-purified from rabbit antiserum by affinity-chromatography using epitope-specific immunogen.
Dilution Range	WB 1:500-1:2000 ELISA 1:20000
Formulation	Liquid in PBS containing 50% Glycerol, 0.5% BSA and 0.02% Sodium Azide.
Isotype	IgG
Molecular Weight	Observed: 56kD
Storage Instruction	Store at -20°C for up to 1 year from the date of receipt, and avoid repeat freeze-thaw cycles.

### TARGET INFORMATION

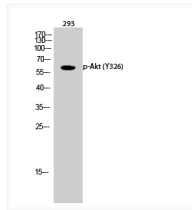
Gene ID	<a href="#">207</a>
Gene Symbol	<a href="#">AKT1</a>
UniProt ID	<a href="#">AKT1_HUMAN</a>
Immunogen Region	292-341 aa
Specificity	Phospho-Akt (Y326) Polyclonal Antibody detects endogenous levels of Akt protein only when phosphorylated at Y326.

### ADDITIONAL INFORMATION

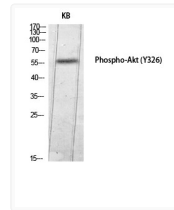
Note **STRICTLY FOR FURTHER SCIENTIFIC RESEARCH USE ONLY (RUO). MUST NOT TO BE USED IN DIAGNOSTIC OR THERAPEUTIC APPLICATIONS.**



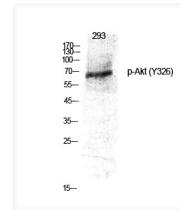
Western blot analysis of lysates from mouse liver using Akt (Phospho-Tyr326) Antibody. The lane the right is blocked with the phospho peptide.



Western blot analysis of 293 cells using Phospho-Akt (Y326) Polyclonal Antibody diluted at 1: 1000



Western blot analysis of KB using Phospho-Akt (Y326) Polyclonal Antibody diluted at 1: 1000



Western blot analysis of various cells using Phospho-Akt (Y326) Polyclonal Antibody diluted at 1: 1000