

Anti-Phospho-KAT5-Ser86 antibody (52-101 aa) (STJ90502)

GENERAL INFORMATION

Product Type	Primary antibodies
Applications	WB/ELISA/IHC
Host / Source	Rabbit
Reactivity	Human/Mouse

PRODUCT PROPERTIES

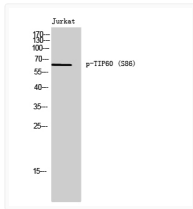
Clonality	Polyclonal
Concentration	1 mg/mL
Conjugation	Unconjugated
Purification	The antibody was affinity-purified from rabbit antiserum by affinity-chromatography using epitope-specific immunogen.
Dilution Range	WB 1:500-2000 IHC-P 1:50-300 ELISA 2000-20000
Formulation	Liquid in PBS containing 50% Glycerol, 0.5% BSA and 0.02% Sodium Azide.
Isotype	IgG
Molecular Weight	Observed: 65kD
Storage Instruction	Store at -20°C for up to 1 year from the date of receipt, and avoid repeat freeze-thaw cycles.

TARGET INFORMATION

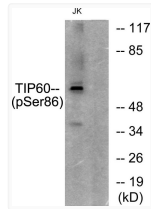
Gene ID	10524
Gene Symbol	KAT5
UniProt ID	KAT5_HUMAN
Immunogen Region	52-101 aa
Specificity	Phospho-TIP60 (S86) Polyclonal Antibody detects endogenous levels of TIP60 protein only when phosphorylated at S86.

ADDITIONAL INFORMATION

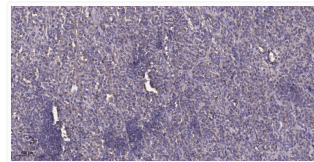
Note STRICTLY FOR FURTHER SCIENTIFIC RESEARCH USE ONLY (RUO). MUST NOT TO BE USED IN DIAGNOSTIC OR THERAPEUTIC APPLICATIONS.



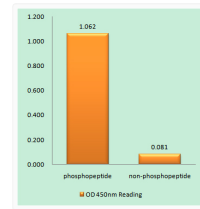
Western blot analysis of Jurkat cells using Phospho-TIP60 (S86) Polyclonal Antibody STJ90502



Western blot analysis of lysates from Jurkat cells, using TIP60 (Phospho-Ser86) Antibody. The lane on the right was STJ90502



Immunohistochemical analysis of paraffin-embedded human colon cancer. 1, Antibody was diluted at 1:200 (4° overnight). STJ90502



Enzyme-Linked Immunosorbent Assay (Phospho-ELISA) for Immunogenic Phosphopeptide (Phospho-left) and Non-Phosphopeptide STJ90502