

Anti-Phospho-PRKCA-Tyr657 antibody (623-672 aa) (STJ90499)

GENERAL INFORMATION

Product Type	Primary antibodies
Applications	WB/IHC
Host / Source	Rabbit
Reactivity	Human/Mouse/Rat

PRODUCT PROPERTIES

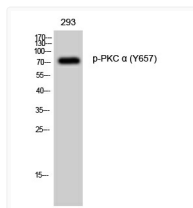
Clonality	Polyclonal
Concentration	1 mg/mL
Conjugation	Unconjugated
Purification	The antibody was affinity-purified from rabbit antiserum by affinity-chromatography using epitope-specific immunogen.
Dilution Range	WB 1:500-2000 IHC-P 1:50-300
Formulation	Liquid in PBS containing 50% Glycerol, 0.5% BSA and 0.02% Sodium Azide.
Isotype	IgG
Molecular Weight	Observed: 80kD
Storage Instruction	Store at -20°C for up to 1 year from the date of receipt, and avoid repeat freeze-thaw cycles.

TARGET INFORMATION

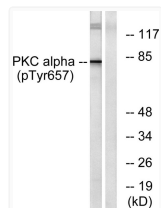
Gene ID	5578
Gene Symbol	PRKCA
UniProt ID	KPCA_HUMAN
Immunogen Region	623-672 aa
Specificity	Phospho-PKC Alpha (Y657) Polyclonal Antibody detects endogenous levels of PKC Alpha protein only when phosphorylated at Y657.

ADDITIONAL INFORMATION

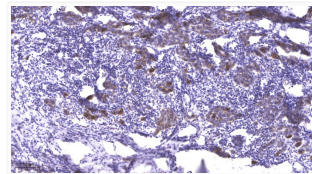
Note STRICTLY FOR FURTHER SCIENTIFIC RESEARCH USE ONLY (RUO). MUST NOT TO BE USED IN DIAGNOSTIC OR THERAPEUTIC APPLICATIONS.



Western blot analysis of 293 cells using Phospho-PKC alpha (Y657) Polyclonal Antibody diluted at 1:1000 STJ90499



Western blot analysis of lysates from COLO205 cells, using PKC alpha (Phospho-Tyr657) Antibody. The lane on the right STJ90499



Immunohistochemical analysis of paraffin-embedded human breast cancer. 1, Antibody was diluted at 1:200 (4°C STJ90499