

Anti-Phospho-ATRIP-Ser68 antibody (34-83 aa) (STJ90496)

GENERAL INFORMATION

Product Type	Primary antibodies
Applications	WB/ELISA
Host / Source	Rabbit
Reactivity	Human/Mouse/Rat

PRODUCT PROPERTIES

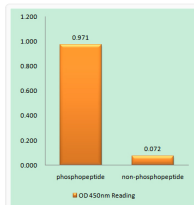
Clonality	Polyclonal
Concentration	1 mg/mL
Conjugation	Unconjugated
Purification	The antibody was affinity-purified from rabbit antiserum by affinity-chromatography using epitope-specific immunogen.
Dilution Range	WB 1:500-1:2000 ELISA 1:40000
Formulation	Liquid in PBS containing 50% Glycerol, 0.5% BSA and 0.02% Sodium Azide.
Isotype	IgG
Molecular Weight	Observed: 80kD
Storage Instruction	Store at -20°C for up to 1 year from the date of receipt, and avoid repeat freeze-thaw cycles.

TARGET INFORMATION

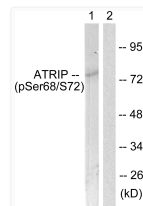
Gene ID	84126
Gene Symbol	ATRIP
UniProt ID	ATRIP_HUMAN
Immunogen Region	34-83 aa
Specificity	Phospho-ATRIP (S68) Polyclonal Antibody detects endogenous levels of ATRIP protein only when phosphorylated at S68.

ADDITIONAL INFORMATION

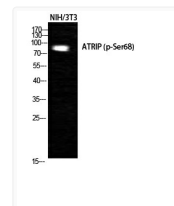
Note **STRICTLY FOR FURTHER SCIENTIFIC RESEARCH USE ONLY (RUO). MUST NOT TO BE USED IN DIAGNOSTIC OR THERAPEUTIC APPLICATIONS.**



Enzyme-Linked Immunosorbent Assay (Phospho-ELISA) for Immunogen Phosphopeptide (Phospho-left) and Non-Phosphopeptide (Phospho-right), using ATRIP (Phospho-Ser68) Antibody



Western blot analysis of lysates from NIH/3T3 cells, using ATRIP (Phospho-Ser68) Antibody. The lane on the right is blocked with the phospho peptide.



Western blot analysis of NIH-3T3 cells using Phospho-ATRIP (S68) Polyclonal Antibody cells nucleus extracted by Minute TM Cytoplasmic and Nuclear Fractionation kit (SC-003, Inventibiotech, MN, USA).