

Anti-Phospho-INPP5D-Tyr1021 antibody (987-1036 aa) (STJ90494)

GENERAL INFORMATION

Product Type	Primary antibodies
Applications	WB/IF/ELISA/IHC
Host / Source	Rabbit
Reactivity	Human/Mouse/Rat

PRODUCT PROPERTIES

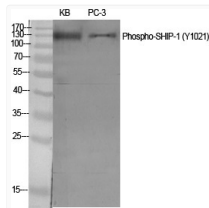
Clonality	Polyclonal
Concentration	1 mg/mL
Conjugation	Unconjugated
Purification	The antibody was affinity-purified from rabbit antiserum by affinity-chromatography using epitope-specific immunogen.
Dilution Range	WB 1:500-2000 IF ICC 1:50-200 ELISA 1:2000-20000 IHC-P 1:50-200
Formulation	Liquid in PBS containing 50% Glycerol, 0.5% BSA and 0.02% Sodium Azide.
Isotype	IgG
Molecular Weight	Observed: 133kD
Storage Instruction	Store at -20°C for up to 1 year from the date of receipt, and avoid repeat freeze-thaw cycles.

TARGET INFORMATION

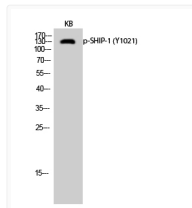
Gene ID	3635
Gene Symbol	INPP5D
UniProt ID	SHIP1_HUMAN
Immunogen Region	987-1036 aa
Specificity	Phospho-SHIP-1 (Y1021) Polyclonal Antibody detects endogenous levels of SHIP-1 protein only when phosphorylated at Y1021.

ADDITIONAL INFORMATION

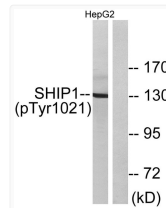
Note **STRICTLY FOR FURTHER SCIENTIFIC RESEARCH USE ONLY (RUO). MUST NOT TO BE USED IN DIAGNOSTIC OR THERAPEUTIC APPLICATIONS.**



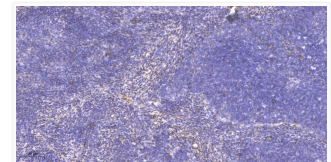
Western blot analysis of various cells using Phospho-SHIP-1 (Y1021) polyclonal antibody diluted at 1:500 STJ90494



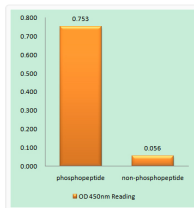
Western blot analysis of KB cells using Phospho-SHIP-1 (Y1021) Polyclonal Antibody diluted at 1:500 STJ90494



Western blot analysis of lysates from HepG2 cells treated with TNF 200 ng/mL 30', using SHIP1 (Phospho-Tyr1021) STJ90494



Immunohistochemical analysis of paraffin-embedded human cervical carcinoma. 1. Antibody was diluted at 1:200 (4° STJ90494)



Enzyme-Linked Immunosorbent Assay (Phospho-ELISA) for Immunogen Phosphopeptide (Phospho-left) and Non-Phosphopeptide (Non-Phosphopeptide) STJ90494