

Anti-Phospho-PPARG-Ser112 antibody (78-127 aa) (STJ90476)

GENERAL INFORMATION

Product Type	Primary antibodies
Applications	WB/ELISA
Host / Source	Rabbit
Reactivity	Human/Mouse/Rat

PRODUCT PROPERTIES

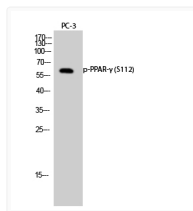
Clonality	Polyclonal
Concentration	1 mg/mL
Conjugation	Unconjugated
Purification	The antibody was affinity-purified from rabbit antiserum by affinity-chromatography using epitope-specific immunogen.
Dilution Range	WB 1:500-1:2000 ELISA 1:10000
Formulation	Liquid in PBS containing 50% Glycerol, 0.5% BSA and 0.02% Sodium Azide.
Isotype	IgG
Molecular Weight	Observed: 60kD
Storage Instruction	Store at -20°C for up to 1 year from the date of receipt, and avoid repeat freeze-thaw cycles.

TARGET INFORMATION

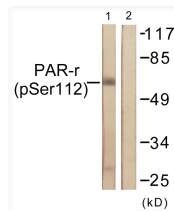
Gene ID	5468
Gene Symbol	PPARG
UniProt ID	PPARG_HUMAN
Immunogen Region	78-127 aa
Specificity	Phospho-PPAR-Gamma (S112) Polyclonal Antibody detects endogenous levels of PPAR-Gamma protein only when phosphorylated at S112.

ADDITIONAL INFORMATION

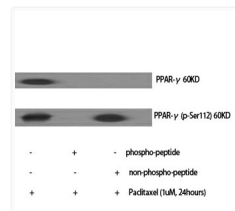
Note STRICTLY FOR FURTHER SCIENTIFIC RESEARCH USE ONLY (RUO). MUST NOT TO BE USED IN DIAGNOSTIC OR THERAPEUTIC APPLICATIONS.



Western blot analysis of PC-3 cells using Phospho-PPAR-Gamma (S112) Polyclonal Antibody diluted at 1: 500



Western blot analysis of lysates from Jurkat cells treated with Paclitaxel 1uM 24h, using PPAR-gamma (Phospho-Ser112) Antibody. The lane on the right is blocked with the phospho peptide.



Western blot analysis of various cells using Phospho-PPAR-Gamma (S112) Polyclonal Antibody diluted at 1: 500