

Anti-Phospho-FoxO1/3-Ser322/S325 antibody (291-340 aa) (STJ90465)

GENERAL INFORMATION

Product Type	Primary antibodies
Applications	WB/IHC/IF/ELISA
Host / Source	Rabbit
Reactivity	Human/Mouse/Rat

PRODUCT PROPERTIES

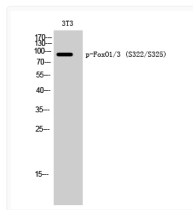
Clonality	Polyclonal
Concentration	1 mg/mL
Conjugation	Unconjugated
Purification	The antibody was affinity-purified from rabbit antiserum by affinity-chromatography using epitope-specific immunogen.
Dilution Range	WB 1:500-1:2000 IHC 1:100-1:300 ELISA 1:5000 IF 1:50-200
Formulation	Liquid in PBS containing 50% Glycerol, 0.5% BSA and 0.02% Sodium Azide.
Isotype	IgG
Molecular Weight	Observed: 97kD
Storage Instruction	Store at -20°C for up to 1 year from the date of receipt, and avoid repeat freeze-thaw cycles.

TARGET INFORMATION

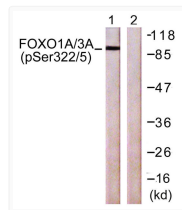
Gene ID	2309 2308
Gene Symbol	FOXO3 FOXO1
UniProt ID	FOXO3_HUMAN FOXO1_HUMAN
Immunogen Region	291-340 aa
Specificity	Phospho-FoxO1/3 (S322/S325) Polyclonal Antibody detects endogenous levels of FoxO1/3 protein only when phosphorylated at S322/S325.

ADDITIONAL INFORMATION

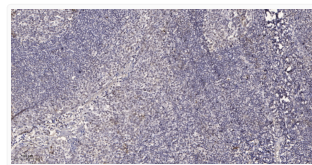
Note **STRICTLY FOR FURTHER SCIENTIFIC RESEARCH USE ONLY (RUO). MUST NOT TO BE USED IN DIAGNOSTIC OR THERAPEUTIC APPLICATIONS.**



Western blot analysis of 3T3 cells using Phospho-FoxO1/3 (S322/S325) Polyclonal Antibody STJ90465



Western blot analysis of lysates from NIH/3T3 cells treated with Wortmannin 40 nM 24 h, using FOXO1A/3A STJ90465



Immunohistochemical analysis of paraffin-embedded human tonsil. 1, Antibody was diluted at 1:200 (4° overnight). 2, STJ90465