

Anti-Phospho-CREB1-Ser121 antibody (91-140 aa) (STJ90463)

GENERAL INFORMATION

Product Type	Primary antibodies
Applications	WB/IHC/IF/ELISA
Host / Source	Rabbit
Reactivity	Human/Mouse/Rat

PRODUCT PROPERTIES

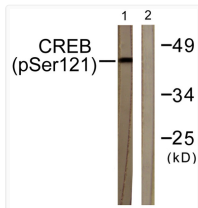
Clonality	Polyclonal
Concentration	1 mg/mL
Conjugation	Unconjugated
Purification	The antibody was affinity-purified from rabbit antiserum by affinity-chromatography using epitope-specific immunogen.
Dilution Range	WB 1:500-1:2000 IHC 1:100-1:300 ELISA 1:5000 IF 1:50-200
Formulation	Liquid in PBS containing 50% Glycerol, 0.5% BSA and 0.02% Sodium Azide.
Isotype	IgG
Molecular Weight	Observed: 43kD
Storage Instruction	Store at -20°C for up to 1 year from the date of receipt, and avoid repeat freeze-thaw cycles.

TARGET INFORMATION

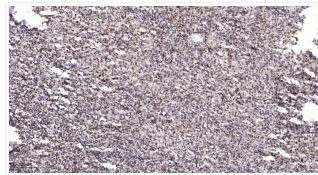
Gene ID	1385
Gene Symbol	CREB1
UniProt ID	CREB1_HUMAN
Immunogen Region	91-140 aa
Specificity	Phospho-CREB-1 (S121) Polyclonal Antibody detects endogenous levels of CREB-1 protein only when phosphorylated at S121.

ADDITIONAL INFORMATION

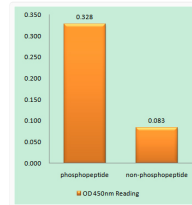
Note STRICTLY FOR FURTHER SCIENTIFIC RESEARCH USE ONLY (RUO). MUST NOT TO BE USED IN DIAGNOSTIC OR THERAPEUTIC APPLICATIONS.



Western blot analysis of lysates from HeLa cells treated with Etoposide 25 μ M 24 h, using CREB (Phospho-Ser121) STJ90463



Immunohistochemical analysis of paraffin-embedded human spleen. 1, Antibody was diluted at 1:200 (4°C overnight). 2, STJ90463



Enzyme-Linked Immunosorbent Assay (Phospho-ELISA) for Immunogen Phosphopeptide (Phospho-left) and Non-Phosphopeptide (Phospho-right) STJ90463