

Anti-Phospho-E2F1-Thr433 antibody (388-437 aa) (STJ90458)

GENERAL INFORMATION

Product Type	Primary antibodies
Applications	WB/ELISA
Host / Source	Rabbit
Reactivity	Human/Mouse

PRODUCT PROPERTIES

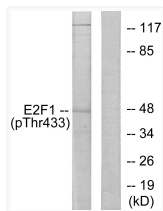
Clonality	Polyclonal
Concentration	1 mg/mL
Conjugation	Unconjugated
Purification	The antibody was affinity-purified from rabbit antiserum by affinity-chromatography using epitope-specific immunogen.
Dilution Range	WB 1:500-1:2000 ELISA 1:5000
Formulation	Liquid in PBS containing 50% Glycerol, 0.5% BSA and 0.02% Sodium Azide.
Isotype	IgG
Molecular Weight	Observed: 60kD
Storage Instruction	Store at -20°C for up to 1 year from the date of receipt, and avoid repeat freeze-thaw cycles.

TARGET INFORMATION

Gene ID	1869
Gene Symbol	E2F1
UniProt ID	E2F1_HUMAN
Immunogen Region	388-437 aa
Specificity	Phospho-E2F-1 (T433) Polyclonal Antibody detects endogenous levels of E2F-1 protein only when phosphorylated at T433.

ADDITIONAL INFORMATION

Note STRICTLY FOR FURTHER SCIENTIFIC RESEARCH USE ONLY (RUO). MUST NOT TO BE USED IN DIAGNOSTIC OR THERAPEUTIC APPLICATIONS.



Western blot analysis of lysates from HeLa cells treated with Etoposide 25uM 24h, using E2F1 (Phospho-Thr433) Antibody. The lane on the right is blocked with the phospho peptide.