

Anti-Phospho-RAD17-Ser645 antibody (621-670 aa) (STJ90451)

GENERAL INFORMATION

| | |
|---------------|--------------------|
| Product Type | Primary antibodies |
| Applications | WB/ELISA/IHC |
| Host / Source | Rabbit |
| Reactivity | Human/Mouse |

PRODUCT PROPERTIES

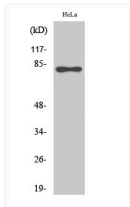
| | |
|---------------------|---|
| Clonality | Polyclonal |
| Concentration | 1 mg/mL |
| Conjugation | Unconjugated |
| Purification | The antibody was affinity-purified from rabbit antiserum by affinity-chromatography using epitope-specific immunogen. |
| Dilution Range | WB 1:500-2000 IHC-P 1:50-300 ELISA 2000-20000 |
| Formulation | Liquid in PBS containing 50% Glycerol, 0.5% BSA and 0.02% Sodium Azide. |
| Isotype | IgG |
| Molecular Weight | Observed: 77kD |
| Storage Instruction | Store at -20°C for up to 1 year from the date of receipt, and avoid repeat freeze-thaw cycles. |

TARGET INFORMATION

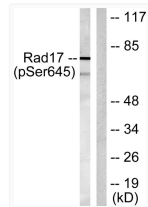
| | |
|------------------|---|
| Gene ID | 5884 |
| Gene Symbol | RAD17 |
| UniProt ID | RAD17_HUMAN |
| Immunogen Region | 621-670 aa |
| Specificity | Phospho-Rad17 (S645) Polyclonal Antibody detects endogenous levels of Rad17 protein only when phosphorylated at S645. |

ADDITIONAL INFORMATION

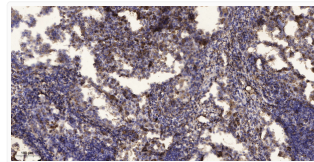
Note STRICTLY FOR FURTHER SCIENTIFIC RESEARCH USE ONLY (RUO). MUST NOT TO BE USED IN DIAGNOSTIC OR THERAPEUTIC APPLICATIONS.



Western Blot analysis of various cells using Phospho-Rad17 (S645) Polyclonal Antibody STJ90451



Western blot analysis of lysates from HeLa cells treated with UV 15', using RAD17 (Phospho-Ser645) Antibody. The lane STJ90451



Immunohistochemical analysis of paraffin-embedded human squamous cell carcinoma of lung. 1, Antibody was diluted at STJ90451