

Anti-Phospho-CCR5-Ser349 antibody (303-352 aa) (STJ90450)

GENERAL INFORMATION

Product Type	Primary antibodies
Applications	WB/ELISA
Host / Source	Rabbit
Reactivity	Human/Rat/Mouse

PRODUCT PROPERTIES

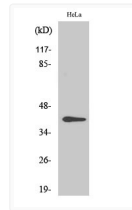
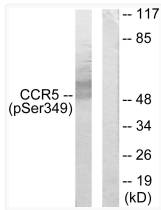
Clonality	Polyclonal
Concentration	1 mg/mL
Conjugation	Unconjugated
Purification	The antibody was affinity-purified from rabbit antiserum by affinity-chromatography using epitope-specific immunogen.
Dilution Range	WB 1:500-1:2000 ELISA 1:5000
Formulation	Liquid in PBS containing 50% Glycerol, 0.5% BSA and 0.02% Sodium Azide.
Isotype	IgG
Molecular Weight	Observed: 40kD
Storage Instruction	Store at -20°C for up to 1 year from the date of receipt, and avoid repeat freeze-thaw cycles.

TARGET INFORMATION

Gene ID	1234
Gene Symbol	CCR5
UniProt ID	CCR5_HUMAN
Immunogen Region	303-352 aa
Specificity	Phospho-CKR-5 (S349) Polyclonal Antibody detects endogenous levels of CKR-5 protein only when phosphorylated at S349.

ADDITIONAL INFORMATION

Note STRICTLY FOR FURTHER SCIENTIFIC RESEARCH USE ONLY (RUO). MUST NOT TO BE USED IN DIAGNOSTIC OR THERAPEUTIC APPLICATIONS.



Western blot analysis of lysates from RAW264.7 cells treated with PMA 125ng/ml 30', using CCR5 (Phospho-Ser349) Antibody. The lane on the right is blocked with the phospho peptide.

Western blot analysis of various cells using Phospho-CKR-5 (S349) Polyclonal Antibody diluted at 1 : 2000.