

Anti-Phospho-EIF4B-Ser422 antibody (388-437 aa) (STJ90440)

GENERAL INFORMATION

Product Type	Primary antibodies
Applications	WB/IHC/IF/ELISA
Host / Source	Rabbit
Reactivity	Human/Mouse

PRODUCT PROPERTIES

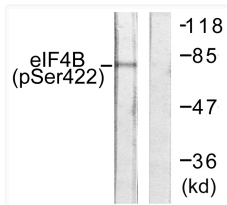
Clonality	Polyclonal
Concentration	1 mg/mL
Conjugation	Unconjugated
Purification	The antibody was affinity-purified from rabbit antiserum by affinity-chromatography using epitope-specific immunogen.
Dilution Range	WB 1:500-1:2000 IHC 1:100-1:300 IF 1:200-1:1000 ELISA 1:40000
Formulation	Liquid in PBS containing 50% Glycerol, 0.5% BSA and 0.02% Sodium Azide.
Isotype	IgG
Molecular Weight	Observed: 80kD
Storage Instruction	Store at -20°C for up to 1 year from the date of receipt, and avoid repeat freeze-thaw cycles.

TARGET INFORMATION

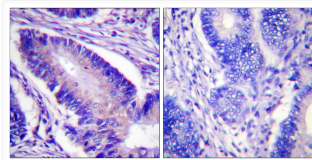
Gene ID	1975
Gene Symbol	EIF4B
UniProt ID	IF4B_HUMAN
Immunogen Region	388-437 aa
Specificity	Phospho-eIF4B (S422) Polyclonal Antibody detects endogenous levels of eIF4B protein only when phosphorylated at S422.

ADDITIONAL INFORMATION

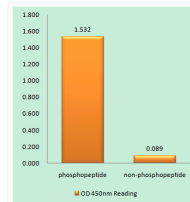
Note **STRICTLY FOR FURTHER SCIENTIFIC RESEARCH USE ONLY (RUO). MUST NOT TO BE USED IN DIAGNOSTIC OR THERAPEUTIC APPLICATIONS.**



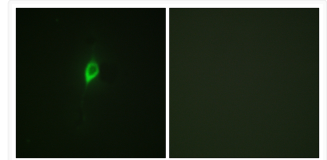
Western blot analysis of lysates from NIH/3T3 cells, using eIF4B (Phospho-Ser422) Antibody. The lane on the right is blocked with the phospho peptide.



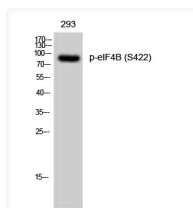
Immunohistochemistry analysis of paraffin-embedded human colon carcinoma, using eIF4B (Phospho-Ser422) Antibody. The picture on the right is blocked with the phospho peptide.



Enzyme-Linked Immunosorbent Assay (Phospho-ELISA) for Immunogen Phosphopeptide (Phospho-left) and Non-Phosphopeptide (Phospho-right), using eIF4B (Phospho-Ser422) Antibody



Immunofluorescence analysis of NIH/3T3 cells, using eIF4B (Phospho-Ser422) Antibody. The picture on the right is blocked with the phospho peptide.



Western blot analysis of 293 cells using Phospho-eIF4B (S422) Polyclonal Antibody diluted at 1:2000