

Anti-Phospho-STAT3-Tyr705 antibody (672-721 aa) (STJ90411)

GENERAL INFORMATION

Product Type	Primary antibodies
Applications	IF/WB/IHC/IP/ELISA
Host / Source	Rabbit
Reactivity	Human/Mouse/Rat/Pig

PRODUCT PROPERTIES

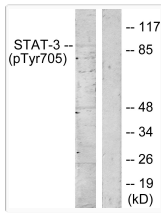
Clonality	Polyclonal
Concentration	1 mg/mL
Conjugation	Unconjugated
Purification	The antibody was affinity-purified from rabbit antiserum by affinity-chromatography using epitope-specific immunogen.
Dilution Range	IF 1:50-200 WB 1:500-1:2000 IHC 1:100-1:300 IP 2-5 ug mg/lysate ELISA 1:20000
Formulation	Liquid in PBS containing 50% Glycerol, 0.5% BSA and 0.02% Sodium Azide.
Isotype	IgG
Molecular Weight	Observed: 88kD
Storage Instruction	Store at -20°C for up to 1 year from the date of receipt, and avoid repeat freeze-thaw cycles.

TARGET INFORMATION

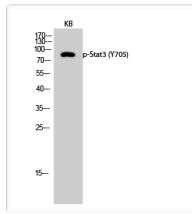
Gene ID	6774
Gene Symbol	STAT3
UniProt ID	STAT3_HUMAN
Immunogen Region	672-721 aa
Specificity	Phospho-Stat3 (Y705) Polyclonal Antibody detects endogenous levels of Stat3 protein only when phosphorylated at Y705.

ADDITIONAL INFORMATION

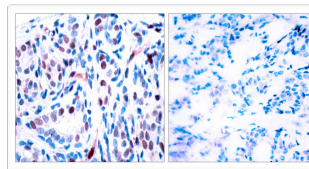
Note	STRICTLY FOR FURTHER SCIENTIFIC RESEARCH USE ONLY (RUO). MUST NOT TO BE USED IN DIAGNOSTIC OR THERAPEUTIC APPLICATIONS.
------	---



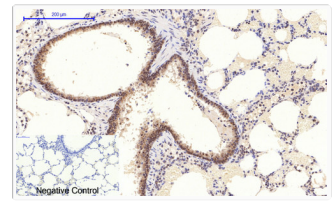
Western blot analysis of lysates from HeLa cells, using STAT3 (Phospho-Tyr705) Antibody. The lane on the right is blocked with the phospho peptide.



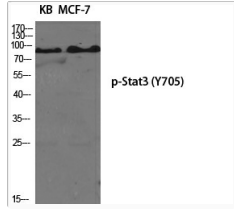
Western blot analysis of KB cells using Phospho-Stat3 (Y705) Polyclonal Antibody diluted at 1: 2000



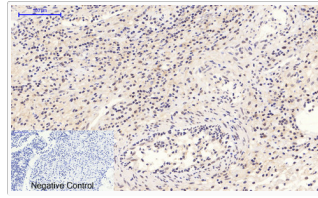
Immunohistochemistry analysis of paraffin-embedded human breast carcinoma, using STAT3 (Phospho-Tyr705) Antibody. The picture on the right is blocked with the phospho peptide.



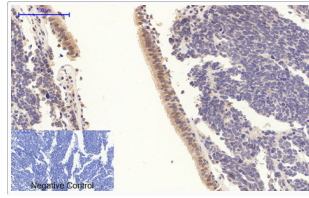
Immunohistochemical analysis of paraffin-embedded Rat-lung tissue. 1, Stat3 (phospho Tyr705) Polyclonal Antibody was diluted at 1:200 (4°C, overnight). 2, Sodium citrate pH 6.0 was used for antibody retrieval (>98°C, 20min). 3, Secondary antibody was diluted at 1:200 (room temperature, 30min). Negative control was used by secondary antibody only.



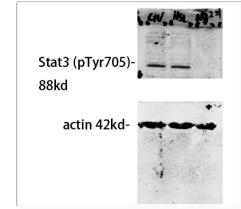
Western blot analysis of various cells using Phospho-Stat3 (Y705) Polyclonal Antibody diluted at 1: 2000



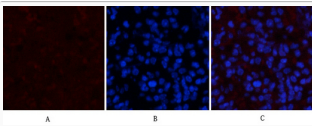
Immunohistochemical analysis of paraffin-embedded Human-Appendix tissue. 1, Stat3 (phospho Tyr705) Polyclonal Antibody was diluted at 1:200 (4°C, overnight). 2, Sodium citrate pH 6.0 was used for antibody retrieval (>98°C, 20min). 3, Secondary antibody was diluted at 1:200 (room temperature, 30min). Negative control was used by secondary antibody only.



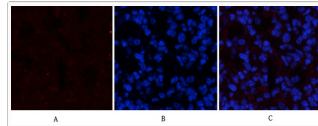
Immunohistochemical analysis of paraffin-embedded Human-lung-cancer tissue. 1, Stat3 (phospho Tyr705) Polyclonal Antibody was diluted at 1:200 (4°C, overnight). 2, Sodium citrate pH 6.0 was used for antibody retrieval (>98°C, 20min). 3, Secondary antibody was diluted at 1:200 (room temperature, 30min). Negative control was used by secondary antibody only.



Western blot analysis of our customer's samples using primary antibody diluted at 1:500. The picture was kindly provided by our customer.. Cell lysate was extracted by Minute Plasma Membrane Protein Isolation and Cell Fractionation Kit (SM-005, Inventbiotech, MN, USA).



Immunofluorescence analysis of mouse-spleen tissue. 1, Stat3 (phospho Tyr705) Polyclonal Antibody (red) was diluted at 1:200 (4°C, overnight). 2, Cy3 labeled Secondary antibody was diluted at 1:300 (room temperature, 50min). 3, Picture B: DAPI (blue) 10min. Picture A: Target. Picture B: DAPI. Picture C: merge of A+B



Immunofluorescence analysis of mouse-spleen tissue. 1, Stat3 (phospho Tyr705) Polyclonal Antibody (red) was diluted at 1:200 (4°C, overnight). 2, Cy3 labeled Secondary antibody was diluted at 1:300 (room temperature, 50min). 3, Picture B: DAPI (blue) 10min. Picture A: Target. Picture B: DAPI. Picture C: merge of A+B