

## Anti-Phospho-STAT1-Tyr701 antibody (668-717 aa) (STJ90409)

### GENERAL INFORMATION

|               |                        |
|---------------|------------------------|
| Product Type  | Primary antibodies     |
| Applications  | IF/WB/IHC/IP/ELISA     |
| Host / Source | Rabbit                 |
| Reactivity    | Human/Mouse/Rat/Monkey |

### PRODUCT PROPERTIES

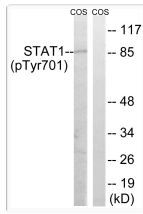
|                     |   |
|---------------------|---|
| Clonality           | Polyclonal  |
| Concentration       | 1 mg/mL   |
| Conjugation         | Unconjugated  |
| Purification        | The antibody was affinity-purified from rabbit antiserum by affinity-chromatography using epitope-specific immunogen. |
| Dilution Range      | IF 1:50-200<br>WB 1:500-1:2000<br>IHC 1:100-1:300<br>IP 2-5 ug mg/lysate<br>ELISA 1:10000                             |
| Formulation         | Liquid in PBS containing 50% Glycerol, 0.5% BSA and 0.02% Sodium Azide.   |
| Isotype             | IgG   |
| Molecular Weight    | Observed: 87kD  |
| Storage Instruction | Store at -20°C for up to 1 year from the date of receipt, and avoid repeat freeze-thaw cycles.                        |

### TARGET INFORMATION

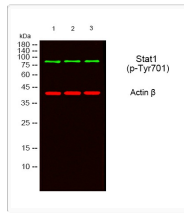
|                  |   |
|------------------|---|
| Gene ID          | <a href="#">6772</a>  |
| Gene Symbol      | <a href="#">STAT1</a>   |
| UniProt ID       | <a href="#">STAT1_HUMAN</a>   |
| Immunogen Region | 668-717 aa  |
| Specificity      | Phospho-Stat1 (Y701) Polyclonal Antibody detects endogenous levels of Stat1 protein only when phosphorylated at Y701. |

### ADDITIONAL INFORMATION

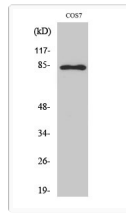
|      |   |
|------|---|
| Note | STRICTLY FOR FURTHER SCIENTIFIC RESEARCH USE ONLY (RUO). MUST NOT TO BE USED IN DIAGNOSTIC OR THERAPEUTIC APPLICATIONS. |
|------|---|



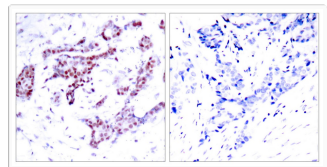
Western blot analysis of lysates from COS7 cells, using STAT1 (Phospho-Tyr701) Antibody. The lane on the right is blocked with the phospho peptide.



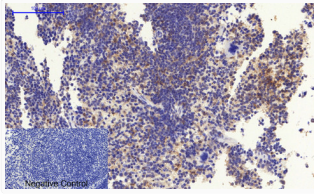
Western blot analysis of lysates from 1) MOUSE-BRAIN, 2) SY-SY5X, 3) COS7 cells, (Green) primary antibody was diluted at 1:1000, 4°C over night, secondary antibody (cat: (NA) was diluted at 1:10000, 37°C 1hour. (Red) Actin Beta monoclonal antibody (5B7) (cat: (STJ96930) antibody was diluted at 1:5000 as loading control, 4°C over night, secondary antibody (cat: (NA) was diluted at 1:10000, 37°C 1hour.



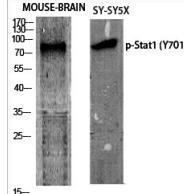
Western blot analysis of COS7 cells using Phospho-Stat1 (Y701) Polyclonal Antibody diluted at 1: 1000



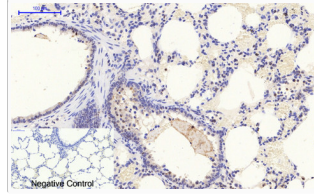
Immunohistochemistry analysis of paraffin-embedded human breast carcinoma, using STAT1 (Phospho-Tyr701) Antibody. The picture on the right is blocked with the phospho peptide.



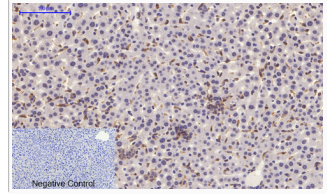
Immunohistochemical analysis of paraffin-embedded Mouse-spleen tissue. 1, Stat1 (phospho Tyr701) Polyclonal Antibody was diluted at 1:200 (4°C, overnight). 2, Sodium citrate pH 6.0 was used for antibody retrieval (>98°C, 20min). 3, Secondary antibody was diluted at 1:200 (room temperature, 30min). Negative control was used by secondary antibody only.



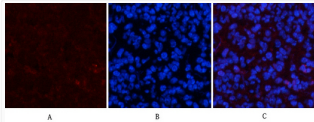
Western blot analysis of various cells using Phospho-Stat1 (Y701) Polyclonal Antibody diluted at 1: 1000



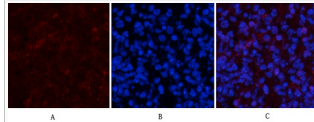
Immunohistochemical analysis of paraffin-embedded Rat-lung tissue. 1, Stat1 (phospho Tyr701) Polyclonal Antibody was diluted at 1:200 (4°C, overnight). 2, Sodium citrate pH 6.0 was used for antibody retrieval (>98°C, 20min). 3, Secondary antibody was diluted at 1:200 (room temperature, 30min). Negative control was used by secondary antibody only.



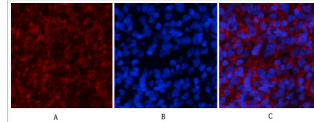
Immunohistochemical analysis of paraffin-embedded Mouse-liver tissue. 1, Stat1 (phospho Tyr701) Polyclonal Antibody was diluted at 1:200 (4°C, overnight). 2, Sodium citrate pH 6.0 was used for antibody retrieval (>98°C, 20min). 3, Secondary antibody was diluted at 1:200 (room temperature, 30min). Negative control was used by secondary antibody only.



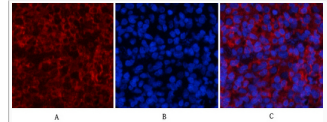
Immunofluorescence analysis of mouse-spleen tissue. 1, Stat1 (phospho Tyr701) Polyclonal Antibody (red) was diluted at 1:200 (4°C, overnight). 2, Cy3 labeled Secondary antibody was diluted at 1:300 (room temperature, 50min). 3, Picture B: DAPI (blue) 10min. Picture A:Target. Picture B: DAPI. Picture C: merge of A+B



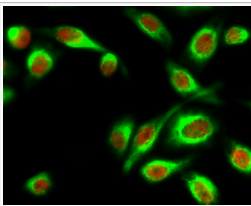
Immunofluorescence analysis of mouse-spleen tissue. 1, Stat1 (phospho Tyr701) Polyclonal Antibody (red) was diluted at 1:200 (4°C, overnight). 2, Cy3 labeled Secondary antibody was diluted at 1:300 (room temperature, 50min). 3, Picture B: DAPI (blue) 10min. Picture A:Target. Picture B: DAPI. Picture C: merge of A+B



Immunofluorescence analysis of rat-spleen tissue. 1, Stat1 (phospho Tyr701) Polyclonal Antibody (red) was diluted at 1:200 (4°C, overnight). 2, Cy3 labeled Secondary antibody was diluted at 1:300 (room temperature, 50min). 3, Picture B: DAPI (blue) 10min. Picture A:Target. Picture B: DAPI. Picture C: merge of A+B



Immunofluorescence analysis of rat-spleen tissue. 1, Stat1 (phospho Tyr701) Polyclonal Antibody (red) was diluted at 1:200 (4°C, overnight). 2, Cy3 labeled Secondary antibody was diluted at 1:300 (room temperature, 50min). 3, Picture B: DAPI (blue) 10min. Picture A:Target. Picture B: DAPI. Picture C: merge of A+B



Immunofluorescence analysis of Hela cell. 1, Stat1 (phospho Tyr701) Polyclonal Antibody (red) was diluted at 1:200 (4°C overnight). HER2 monoclonal antibody (11H9) (green) was diluted at 1:200 (4°C overnight). 2, Goat Anti Rabbit Alexa Fluor 594 Catalog: (NA) was diluted at 1:1000 (room temperature, 50min). Goat Anti Mouse Alexa Fluor 488 Catalog: (NA) was diluted at 1:1000 (room temperature, 50min).