

Anti-Phospho-PGR-Ser190 antibody (161-210 aa) (STJ90395)

GENERAL INFORMATION

Product Type	Primary antibodies
Applications	WB/IHC/IF/ELISA
Host / Source	Rabbit
Reactivity	Human/Monkey

PRODUCT PROPERTIES

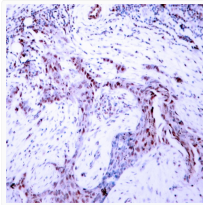
Clonality	Polyclonal
Concentration	1 mg/mL
Conjugation	Unconjugated
Purification	The antibody was affinity-purified from rabbit antiserum by affinity-chromatography using epitope-specific immunogen.
Dilution Range	WB 1:500-1:2000 IHC 1:100-1:300 ELISA 1:20000 IF 1:50-200
Formulation	Liquid in PBS containing 50% Glycerol, 0.5% BSA and 0.02% Sodium Azide.
Isotype	IgG
Molecular Weight	Observed: 99kD
Storage Instruction	Store at -20°C for up to 1 year from the date of receipt, and avoid repeat freeze-thaw cycles.

TARGET INFORMATION

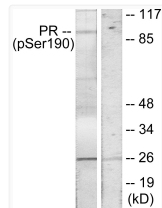
Gene ID	5241
Gene Symbol	PGR
UniProt ID	PRGR_HUMAN
Immunogen Region	161-210 aa
Specificity	Phospho-PR (S190) Polyclonal Antibody detects endogenous levels of PR protein only when phosphorylated at S190.

ADDITIONAL INFORMATION

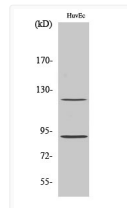
Note **STRICTLY FOR FURTHER SCIENTIFIC RESEARCH USE ONLY (RUO). MUST NOT TO BE USED IN DIAGNOSTIC OR THERAPEUTIC APPLICATIONS.**



Immunohistochemistry analysis of paraffin-embedded human breast carcinoma, using Progesterone Receptor (Phospho-Ser190) Antibody.



Western blot analysis of lysates from COS7 cells treated with EGF, using Progesterone Receptor (Phospho-Ser190) Antibody. The lane on the right is blocked with the phospho peptide.



Western blot analysis of various cells using Phospho-PR (S190) Polyclonal Antibody diluted at 1:1000