

Anti-Phospho-RPS6KB1-Thr229 antibody (195-244 aa) (STJ90375)

GENERAL INFORMATION

Product Type	Primary antibodies
Applications	WB/IHC/IF/ELISA
Host / Source	Rabbit
Reactivity	Human/Mouse/Rat/Pig

PRODUCT PROPERTIES

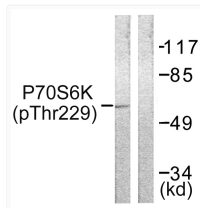
Clonality	Polyclonal
Concentration	1 mg/mL
Conjugation	Unconjugated
Purification	The antibody was affinity-purified from rabbit antiserum by affinity-chromatography using epitope-specific immunogen.
Dilution Range	WB 1:500-1:2000 IHC 1:100-1:300 IF 1:200-1:1000 ELISA 1:5000
Formulation	Liquid in PBS containing 50% Glycerol, 0.5% BSA and 0.02% Sodium Azide.
Isotype	IgG
Molecular Weight	Observed: 60kD
Storage Instruction	Store at -20°C for up to 1 year from the date of receipt, and avoid repeat freeze-thaw cycles.

TARGET INFORMATION

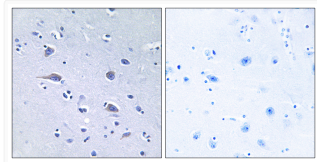
Gene ID	6198
Gene Symbol	RPS6KB1
UniProt ID	KS6B1_HUMAN
Immunogen Region	195-244 aa
Specificity	Phospho-p70 S6 kinase Alpha (T229) Polyclonal Antibody detects endogenous levels of p70 S6 kinase Alpha protein only when phosphorylated at T229.

ADDITIONAL INFORMATION

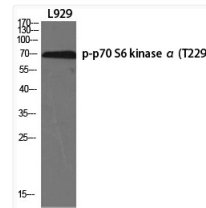
Note **STRICTLY FOR FURTHER SCIENTIFIC RESEARCH USE ONLY (RUO). MUST NOT TO BE USED IN DIAGNOSTIC OR THERAPEUTIC APPLICATIONS.**



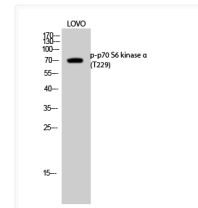
Western blot analysis of lysates from Jurkat cells, using p70 S6 Kinase (Phospho-Thr229) Antibody. The lane on the right is blocked with the phospho peptide.



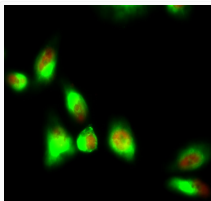
Immunohistochemistry analysis of paraffin-embedded human brain, using p70 S6 Kinase (Phospho-Thr229) Antibody. The picture on the right is blocked with the phospho peptide.



Western blot analysis of various cells using Phospho-p70 S6 kinase Alpha (T229) Polyclonal Antibody diluted at 1: 500



Western blot analysis of LOVO cells using Phospho-p70 S6 kinase Alpha (T229) Polyclonal Antibody diluted at 1: 500



Immunofluorescence analysis of HeLa cell. 1, p70 S6 kinase Alpha (phospho Thr229) Polyclonal Antibody (red) was diluted at 1:200 (4°C overnight). Caspase-8 monoclonal antibody (2G12) (green) was diluted at 1:200 (4°C overnight). 2, Goat Anti Rabbit Alexa Fluor 594 Catalog: (NA was diluted at 1:1000 (room temperature, 50min). Goat Anti Mouse Alexa Fluor 488 Catalog: (NA was diluted at 1:1000 (room temperature, 50min).