

Anti-Phospho-NF2-Ser518 antibody (485-534 aa) (STJ90340)

GENERAL INFORMATION

Product Type	Primary antibodies
Applications	WB/IHC/IF/ELISA
Host / Source	Rabbit
Reactivity	Human/Mouse/Rat

PRODUCT PROPERTIES

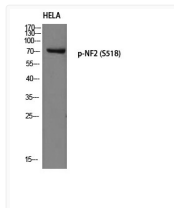
Clonality	Polyclonal
Concentration	1 mg/mL
Conjugation	Unconjugated
Purification	The antibody was affinity-purified from rabbit antiserum by affinity-chromatography using epitope-specific immunogen.
Dilution Range	WB 1:500-1:2000 IHC 1:100-1:300 IF 1:200-1:1000 ELISA 1:5000
Formulation	Liquid in PBS containing 50% Glycerol, 0.5% BSA and 0.02% Sodium Azide.
Isotype	IgG
Molecular Weight	Observed: 70kD
Storage Instruction	Store at -20°C for up to 1 year from the date of receipt, and avoid repeat freeze-thaw cycles.

TARGET INFORMATION

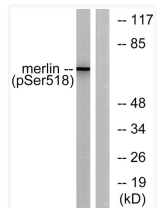
Gene ID	4771
Gene Symbol	NF2
UniProt ID	MERL_HUMAN
Immunogen Region	485-534 aa
Specificity	Phospho-NF2 (S518) Polyclonal Antibody detects endogenous levels of NF2 protein only when phosphorylated at S518.

ADDITIONAL INFORMATION

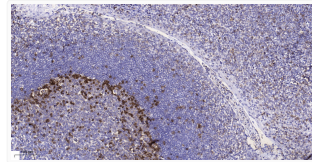
Note **STRICTLY FOR FURTHER SCIENTIFIC RESEARCH USE ONLY (RUO). MUST NOT TO BE USED IN DIAGNOSTIC OR THERAPEUTIC APPLICATIONS.**



Western blot analysis of HeLa using p-NF2 (S518) antibody. Antibody was diluted at 1:1000 STJ90340



Western blot analysis of lysates from HUVEC cells treated with IFN- α 1000 U/ml for 18 h, using Merlin (Phospho-Ser518) STJ90340



Immunohistochemical analysis of paraffin-embedded human tonsil. 1, Antibody was diluted at 1:200 (4° overnight). 2, STJ90340