

Anti-Phospho-MAP2K3-Ser218 antibody (173-222 aa) (STJ90330)

GENERAL INFORMATION

Product Type	Primary antibodies
Applications	WB/IHC/IF/ELISA
Host / Source	Rabbit
Reactivity	Human/Mouse/Rat

PRODUCT PROPERTIES

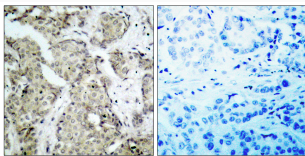
Clonality	Polyclonal
Concentration	1 mg/mL
Conjugation	Unconjugated
Purification	The antibody was affinity-purified from rabbit antiserum by affinity-chromatography using epitope-specific immunogen.
Dilution Range	WB 1:500-1:2000 IHC 1:100-1:300 ELISA 1:5000 IF 1:50-200
Formulation	Liquid in PBS containing 50% Glycerol, 0.5% BSA and 0.02% Sodium Azide.
Isotype	IgG
Molecular Weight	Observed: 39kD
Storage Instruction	Store at -20°C for up to 1 year from the date of receipt, and avoid repeat freeze-thaw cycles.

TARGET INFORMATION

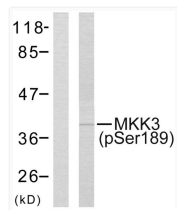
Gene ID	5606
Gene Symbol	MAP2K3
UniProt ID	MP2K3_HUMAN
Immunogen Region	173-222 aa
Specificity	Phospho-MEK-3 (S189) Polyclonal Antibody detects endogenous levels of MEK-3 protein only when phosphorylated at S189.

ADDITIONAL INFORMATION

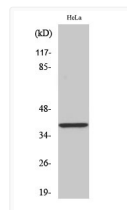
Note **STRICTLY FOR FURTHER SCIENTIFIC RESEARCH USE ONLY (RUO). MUST NOT TO BE USED IN DIAGNOSTIC OR THERAPEUTIC APPLICATIONS.**



Immunohistochemistry analysis of paraffin-embedded human breast carcinoma, using MKK3 (Phospho-Ser189) Antibody. The picture on the right is blocked with the phospho peptide.



Western blot analysis of lysates from MDA-MB-435 cells, using MKK3 (Phospho-Ser189) Antibody. The lane on the left is blocked with the phospho peptide.



Western blot analysis of various cells using Phospho-MEK-3 (S218) Polyclonal Antibody