

## Anti-Phospho-IGF-IR-Tyr1161 antibody (1131-1180 aa) (STJ90298)

### GENERAL INFORMATION

Product Type	Primary antibodies
Applications	WB/IHC/IF/IP/ELISA
Host / Source	Rabbit
Reactivity	Human/Mouse/Rat

### PRODUCT PROPERTIES

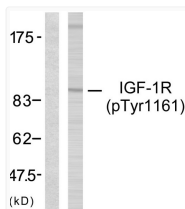
Clonality	Polyclonal
Concentration	1 mg/mL
Conjugation	Unconjugated
Purification	The antibody was affinity-purified from rabbit antiserum by affinity-chromatography using epitope-specific immunogen.
Dilution Range	WB 1:500-1:2000 IHC 1:100-1:300 IP 2-5 ug mg/lysate ELISA 1:20000 IF 1:50-200
Formulation	Liquid in PBS containing 50% Glycerol, 0.5% BSA and 0.02% Sodium Azide.
Isotype	IgG
Molecular Weight	Observed: pro:155kD, receter beta:95kD
Storage Instruction	Store at -20°C for up to 1 year from the date of receipt, and avoid repeat freeze-thaw cycles.

### TARGET INFORMATION

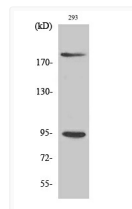
Gene ID	<a href="#">3480</a> <a href="#">3643</a>
Gene Symbol	<a href="#">IGF1R</a> <a href="#">INSR</a>
UniProt ID	<a href="#">IGF1R_HUMAN</a> <a href="#">INSR_HUMAN</a>
Immunogen Region	1131-1180 aa
Specificity	Phospho-IGF-IR (Y1161) Polyclonal Antibody detects endogenous levels of IGF-IR protein only when phosphorylated at Y1161.

### ADDITIONAL INFORMATION

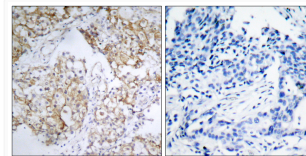
Note STRICTLY FOR FURTHER SCIENTIFIC RESEARCH USE ONLY (RUO). MUST NOT TO BE USED IN DIAGNOSTIC OR THERAPEUTIC APPLICATIONS.



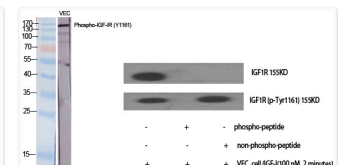
Western blot analysis of lysates from 293 cells treated with Insulin, using IGF1R (Phospho-Tyr1161) Antibody. The lane on the left is blocked with the phospho peptide.



Western blot analysis of 293 cells using Phospho-IGF-IR (Y1161) Polyclonal Antibody diluted at 1:2000



Immunohistochemistry analysis of paraffin-embedded human breast carcinoma, using IGF1R (Phospho-Tyr1161) Antibody. The picture on the right is blocked with the phospho peptide.



Western blot analysis of various cells using Phospho-IGF-IR (Y1161) Polyclonal Antibody diluted at 1:2000