

Anti-Phospho-ICAM1-Tyr512 antibody (479-528 aa) (STJ90297)

GENERAL INFORMATION

| | |
|---------------|--------------------|
| Product Type | Primary antibodies |
| Applications | WB/ELISA |
| Host / Source | Rabbit |
| Reactivity | Human/Rat/Mouse |

PRODUCT PROPERTIES

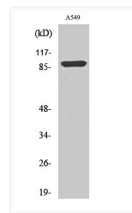
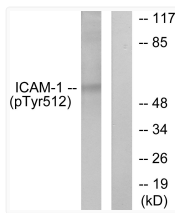
| | |
|---------------------|---|
| Clonality | Polyclonal |
| Concentration | 1 mg/mL |
| Conjugation | Unconjugated |
| Purification | The antibody was affinity-purified from rabbit antiserum by affinity-chromatography using epitope-specific immunogen. |
| Dilution Range | WB 1:500-1:2000 ELISA 1:40000 |
| Formulation | Liquid in PBS containing 50% Glycerol, 0.5% BSA and 0.02% Sodium Azide. |
| Isotype | IgG |
| Molecular Weight | Observed: 57kD |
| Storage Instruction | Store at -20°C for up to 1 year from the date of receipt, and avoid repeat freeze-thaw cycles. |

TARGET INFORMATION

| | |
|------------------|---|
| Gene ID | 3383 |
| Gene Symbol | ICAM1 |
| UniProt ID | ICAM1_HUMAN |
| Immunogen Region | 479-528 aa |
| Specificity | Phospho-ICAM-1 (Y512) Polyclonal Antibody detects endogenous levels of ICAM-1 protein only when phosphorylated at Y512. |

ADDITIONAL INFORMATION

Note STRICTLY FOR FURTHER SCIENTIFIC RESEARCH USE ONLY (RUO). MUST NOT TO BE USED IN DIAGNOSTIC OR THERAPEUTIC APPLICATIONS.



Western blot analysis of lysates from HeLa cells treated with TNF-alpha 20ng/ml 5', using ICAM-1 (Phospho-Tyr512) Antibody. The lane on the right is blocked with the phospho peptide.

Western blot analysis of various cells using Phospho-ICAM-1 (Y512) Polyclonal Antibody diluted at 1:500.