

## Anti-Phospho-HSPB1-Ser82 antibody (48-97 aa) (STJ90296)

### GENERAL INFORMATION

Product Type	Primary antibodies
Applications	WB/IHC/IF/ELISA
Host / Source	Rabbit
Reactivity	Human/Mouse/Rat

### PRODUCT PROPERTIES

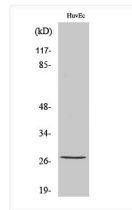
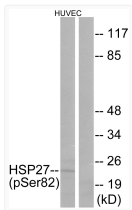
Clonality	Polyclonal
Concentration	1 mg/mL
Conjugation	Unconjugated
Purification	The antibody was affinity-purified from rabbit antiserum by affinity-chromatography using epitope-specific immunogen.
Dilution Range	WB 1:500-1:2000 IHC 1:100-1:300 ELISA 1:5000 IF 1:50-200
Formulation	Liquid in PBS containing 50% Glycerol, 0.5% BSA and 0.02% Sodium Azide.
Isotype	IgG
Molecular Weight	Observed: 27kD
Storage Instruction	Store at -20°C for up to 1 year from the date of receipt, and avoid repeat freeze-thaw cycles.

### TARGET INFORMATION

Gene ID	<a href="#">3315</a>
Gene Symbol	<a href="#">HSPB1</a>
UniProt ID	<a href="#">HSPB1_HUMAN</a>
Immunogen Region	48-97 aa
Specificity	Phospho-HSP27 (S82) Polyclonal Antibody detects endogenous levels of HSP27 protein only when phosphorylated at S82.

### ADDITIONAL INFORMATION

Note **STRICTLY FOR FURTHER SCIENTIFIC RESEARCH USE ONLY (RUO). MUST NOT TO BE USED IN DIAGNOSTIC OR THERAPEUTIC APPLICATIONS.**



Western blot analysis of lysates from HUVEC cells treated with TNF 20ng/ml 30', using HSP27 (Phospho-Ser82) Antibody. The lane on the right is blocked with the phospho peptide.

Western blot analysis of various cells using Phospho-HSP27 (S82) Polyclonal Antibody diluted at 1:1000.