

Anti-Phospho-Histone H3-Ser10 antibody (1-50 aa) (STJ90289)

GENERAL INFORMATION

Product Type	Primary antibodies
Applications	WB/IHC/IHC-F/FC/ICC/IF/ELISA
Host / Source	Rabbit
Reactivity	Human/Mouse/Rat/D.melanogaster

PRODUCT PROPERTIES

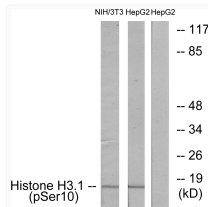
Clonality	Polyclonal
Concentration	1 mg/mL
Conjugation	Unconjugated
Purification	The antibody was affinity-purified from rabbit antiserum by affinity-chromatography using epitope-specific immunogen.
Dilution Range	WB 1:500-1:2000 IHC 1:100-1:300 ICC IF 1:200-1:1000 ELISA 1:10000 IHC-fc 1:500
Formulation	Liquid in PBS containing 50% Glycerol, 0.5% BSA and 0.02% Sodium Azide.
Isotype	IgG
Molecular Weight	Observed: 15kD
Storage Instruction	Store at -20°C for up to 1 year from the date of receipt, and avoid repeat freeze-thaw cycles.

TARGET INFORMATION

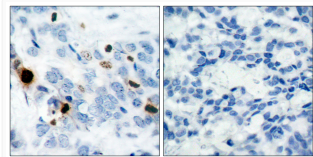
Gene ID	8350/8351/8352/8353/8354/8355/8356/8357/8358/89683020/3021
Gene Symbol	H3C1.H3C2.H3C3.H3C4.H3C6.H3C7.H3C8.H3C10.H3C11.H3C12 H31_HUMAN H33_HUMAN H32_HUMAN <
Immunogen Region	1-50 aa
Specificity	Phospho-Histone H3 (S10) Polyclonal Antibody detects endogenous levels of Histone H3 protein only when phosphorylated at S10.

ADDITIONAL INFORMATION

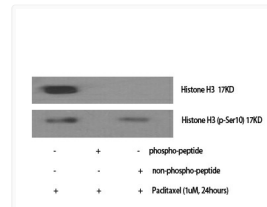
Note **STRICTLY FOR FURTHER SCIENTIFIC RESEARCH USE ONLY (RUO). MUST NOT TO BE USED IN DIAGNOSTIC OR THERAPEUTIC APPLICATIONS.**



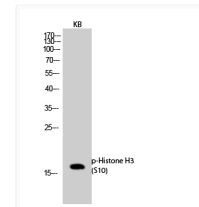
Western blot analysis of lysates from NIH/3T3 cells and HepG2 cells, using Histone H3.1 (Phospho-Ser10) Antibody. The lane on the right is blocked with the phospho peptide.



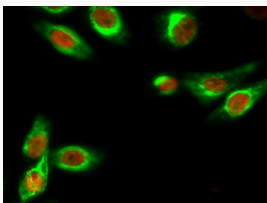
Immunohistochemistry analysis of paraffin-embedded human breast carcinoma, using Histone H3.1 (Phospho-Ser10) Antibody. The picture on the right is blocked with the phospho peptide.



Western blot analysis of various cells using Phospho-Histone H3 (S10) Polyclonal Antibody cells nucleus extracted by Minute TM Cytoplasmic and Nuclear Fractionation kit (SC-003, Inventibiotech, MN, USA).



Western blot analysis of KB cells using Phospho-Histone H3 (S10) Polyclonal Antibody cells nucleus extracted by Minute TM Cytoplasmic and Nuclear Fractionation kit (SC-003, Inventibiotech, MN, USA).



Immunofluorescence analysis of HeLa cell. 1, Histone H3 (phospho Ser10) Polyclonal Antibody (red) was diluted at 1:200 (4°C overnight). Beta-Tubulin monoclonal antibody (5G3) (green) was diluted at 1:200 (4°C overnight). 2, Goat Anti Rabbit Alexa Fluor 594 Catalog: (NA was diluted at 1:1000 (room temperature, 50min). Goat Anti Mouse Alexa Fluor 488 Catalog: (NA was diluted at 1:1000 (room temperature, 50min).