

Anti-Phospho-GSK3A-Ser21 antibody (10-59 aa) (STJ90282)

GENERAL INFORMATION

Product Type	Primary antibodies
Applications	WB/IHC/IF/IP/ELISA
Host / Source	Rabbit
Reactivity	Human/Mouse/Rat

PRODUCT PROPERTIES

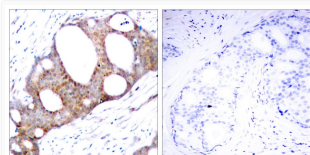
Clonality	Polyclonal
Concentration	1 mg/mL
Conjugation	Unconjugated
Purification	The antibody was affinity-purified from rabbit antiserum by affinity-chromatography using epitope-specific immunogen.
Dilution Range	WB 1:500-1:2000 IHC 1:100-1:300 IP 2-5 ug mg/lysate ELISA 1:20000 IF 1:50-200
Formulation	Liquid in PBS containing 50% Glycerol, 0.5% BSA and 0.02% Sodium Azide.
Isotype	IgG
Molecular Weight	Observed: 55kD
Storage Instruction	Store at -20°C for up to 1 year from the date of receipt, and avoid repeat freeze-thaw cycles.

TARGET INFORMATION

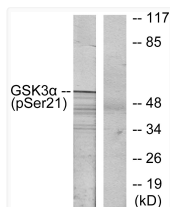
Gene ID	2931
Gene Symbol	GSK3A
UniProt ID	GSK3A_HUMAN
Immunogen Region	10-59 aa
Specificity	Phospho-GSK3 Alpha (S21) Polyclonal Antibody detects endogenous levels of GSK3 Alpha protein only when phosphorylated at S21.

ADDITIONAL INFORMATION

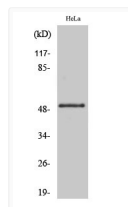
Note **STRICTLY FOR FURTHER SCIENTIFIC RESEARCH USE ONLY (RUO). MUST NOT TO BE USED IN DIAGNOSTIC OR THERAPEUTIC APPLICATIONS.**



Immunohistochemistry analysis of paraffin-embedded human breast carcinoma, using GSK3 alpha (Phospho-Ser21) Antibody. The picture on the right is blocked with the phospho peptide.



Western blot analysis of lysates from ovary cancer, using GSK3 alpha (Phospho-Ser21) Antibody. The lane on the right is blocked with the phospho peptide.



Western blot analysis of various cells using Phospho-GSK3 Alpha (S21) Polyclonal Antibody