

Anti-Phospho-ARHGAP35-Tyr1087 antibody (STJ90281)

GENERAL INFORMATION

Product Type	Primary antibodies
Applications	WB/ELISA
Host / Source	Rabbit
Reactivity	Human/Mouse/Rat

PRODUCT PROPERTIES

Clonality	Polyclonal
Concentration	1 mg/mL
Conjugation	Unconjugated
Purification	The antibody was affinity-purified from rabbit antiserum by affinity-chromatography using epitope-specific immunogen.
Dilution Range	WB 1:500-1:2000 ELISA 1:10000
Formulation	Liquid in PBS containing 50% Glycerol, 0.5% BSA and 0.02% Sodium Azide.
Isotype	IgG
Molecular Weight	Observed: 190kD
Storage Instruction	Store at -20°C for up to 1 year from the date of receipt, and avoid repeat freeze-thaw cycles.

TARGET INFORMATION

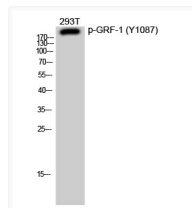
Gene ID	2909
Gene Symbol	ARHGAP35
UniProt ID	RHG35_HUMAN
Specificity	Phospho-GRF-1 (Y1087) Polyclonal Antibody detects endogenous levels of GRF-1 protein only when phosphorylated at Y1087.

ADDITIONAL INFORMATION

Note **STRICTLY FOR FURTHER SCIENTIFIC RESEARCH USE ONLY (RUO). MUST NOT TO BE USED IN DIAGNOSTIC OR THERAPEUTIC APPLICATIONS.**



Western blot analysis of lysates from K562 cells, using phospho-GRF-1 (Phospho-Tyr1087) antibody.



Western blot analysis of 293T cells using Phospho-GRF-1 (Y1087) Polyclonal Antibody diluted at 1:1000