

Anti-Phospho-GAP43-Ser41 antibody (8-57 aa) (STJ90279)

GENERAL INFORMATION

Product Type	Primary antibodies
Applications	IF/ELISA
Host / Source	Rabbit
Reactivity	Human/Mouse/Rat

PRODUCT PROPERTIES

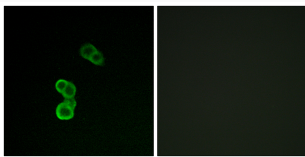
Clonality	Polyclonal
Concentration	1 mg/mL
Conjugation	Unconjugated
Purification	The antibody was affinity-purified from rabbit antiserum by affinity-chromatography using epitope-specific immunogen.
Dilution Range	IF 1:200-1:1000 ELISA 1:20000
Formulation	Liquid in PBS containing 50% Glycerol, 0.5% BSA and 0.02% Sodium Azide.
Isotype	IgG
Molecular Weight	Calculated: 25kD
Storage Instruction	Store at -20°C for up to 1 year from the date of receipt, and avoid repeat freeze-thaw cycles.

TARGET INFORMATION

Gene ID	2596
Gene Symbol	GAP43
UniProt ID	NEUM_HUMAN
Immunogen Region	8-57 aa
Specificity	Phospho-GAP-43 (S41) Polyclonal Antibody detects endogenous levels of GAP-43 protein only when phosphorylated at S41.

ADDITIONAL INFORMATION

Note STRICTLY FOR FURTHER SCIENTIFIC RESEARCH USE ONLY (RUO). MUST NOT TO BE USED IN DIAGNOSTIC OR THERAPEUTIC APPLICATIONS.



Immunofluorescence analysis of MCF-7 cells, using GAP43 (Phospho-Ser41) Antibody. The picture on the right is blocked with the phospho peptide.