

## Anti-Phospho-GAB1-Tyr627 antibody (611-643 aa) (STJ90278)

### GENERAL INFORMATION

Product Type	Primary antibodies
Applications	WB/ELISA
Host / Source	Rabbit
Reactivity	Human/Mouse/Monkey

### PRODUCT PROPERTIES

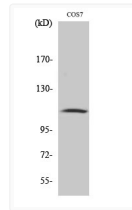
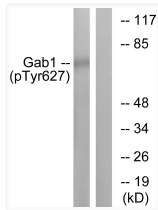
Clonality	Polyclonal
Concentration	1 mg/mL
Conjugation	Unconjugated
Purification	The antibody was affinity-purified from rabbit antiserum by affinity-chromatography using epitope-specific immunogen.
Dilution Range	WB 1:500-1:2000 ELISA 1:10000
Formulation	Liquid in PBS containing 50% Glycerol, 0.5% BSA and 0.02% Sodium Azide.
Isotype	IgG
Molecular Weight	Observed: 110kD
Storage Instruction	Store at -20°C for up to 1 year from the date of receipt, and avoid repeat freeze-thaw cycles.

### TARGET INFORMATION

Gene ID	<a href="#">2549</a>
Gene Symbol	<a href="#">GAB1</a>
UniProt ID	<a href="#">GAB1_HUMAN</a>
Immunogen Region	611-643 aa
Specificity	Phospho-Gab 1 (Y627) Polyclonal Antibody detects endogenous levels of Gab 1 protein only when phosphorylated at Y627.

### ADDITIONAL INFORMATION

Note STRICTLY FOR FURTHER SCIENTIFIC RESEARCH USE ONLY (RUO). MUST NOT TO BE USED IN DIAGNOSTIC OR THERAPEUTIC APPLICATIONS.



Western blot analysis of GAB1 (Phospho-Tyr627) Antibody. The lane on the right is blocked with the GAB1 (Phospho-Tyr627) peptide.

Western blot analysis of various cells using Phospho-Gab 1 (Y627) Polyclonal Antibody