

## Anti-Phospho-EPHA2-Tyr588 antibody (STJ90258)

### GENERAL INFORMATION

Product Type	Primary antibodies
Applications	WB/ELISA
Host / Source	Rabbit
Reactivity	Human/Mouse

### PRODUCT PROPERTIES

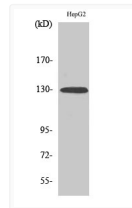
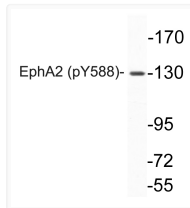
Clonality	Polyclonal
Concentration	1 mg/mL
Conjugation	Unconjugated
Purification	The antibody was affinity-purified from rabbit antiserum by affinity-chromatography using epitope-specific immunogen.
Dilution Range	WB 1:500-1:2000 ELISA 1:10000
Formulation	Liquid in PBS containing 50% Glycerol, 0.5% BSA and 0.02% Sodium Azide.
Isotype	IgG
Molecular Weight	Observed: 130kD
Storage Instruction	Store at -20°C for up to 1 year from the date of receipt, and avoid repeat freeze-thaw cycles.

### TARGET INFORMATION

Gene ID	<a href="#">1969</a>
Gene Symbol	<a href="#">EPHA2</a>
UniProt ID	<a href="#">EPHA2_HUMAN</a>
Specificity	Phospho-EphA2 (Y588) Polyclonal Antibody detects endogenous levels of EphA2 protein only when phosphorylated at Y588.

### ADDITIONAL INFORMATION

Note **STRICTLY FOR FURTHER SCIENTIFIC RESEARCH USE ONLY (RUO). MUST NOT TO BE USED IN DIAGNOSTIC OR THERAPEUTIC APPLICATIONS.**



Western blot analysis of lysates from HepG2 cell, using phospho-EphA2 (Phospho-Tyr588) antibody. Western blot analysis of various cells using Phospho-EphA2 (Y588) Polyclonal Antibody.