

Anti-Phospho-ELK1-Ser389 antibody (356-405 aa) (STJ90256)

GENERAL INFORMATION

Product Type	Primary antibodies
Applications	WB/IHC/IF/IP/ELISA
Host / Source	Rabbit
Reactivity	Human/Mouse/Rat

PRODUCT PROPERTIES

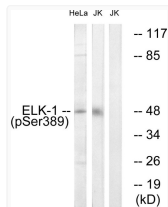
Clonality	Polyclonal
Concentration	1 mg/mL
Conjugation	Unconjugated
Purification	The antibody was affinity-purified from rabbit antiserum by affinity-chromatography using epitope-specific immunogen.
Dilution Range	WB 1:500-1:2000 IHC 1:100-1:300 IP 2-5 ug mg/lysate ELISA 1:10000 IF 1:50-200
Formulation	Liquid in PBS containing 50% Glycerol, 0.5% BSA and 0.02% Sodium Azide.
Isotype	IgG
Molecular Weight	Observed: 48kD
Storage Instruction	Store at -20°C for up to 1 year from the date of receipt, and avoid repeat freeze-thaw cycles.

TARGET INFORMATION

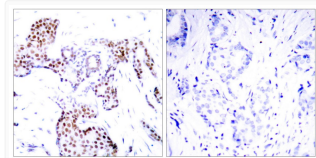
Gene ID	2002
Gene Symbol	ELK1
UniProt ID	ELK1_HUMAN
Immunogen Region	356-405 aa
Specificity	Phospho-Elk-1 (S389) Polyclonal Antibody detects endogenous levels of Elk-1 protein only when phosphorylated at S389.

ADDITIONAL INFORMATION

Note **STRICTLY FOR FURTHER SCIENTIFIC RESEARCH USE ONLY (RUO). MUST NOT TO BE USED IN DIAGNOSTIC OR THERAPEUTIC APPLICATIONS.**



Western blot analysis of lysates from Jurkat cells treated with UV 15' and HeLa cells treated with paclitaxel 1uM 24h, using Elk1 (Phospho-Ser389) Antibody. The lane on the right is blocked with the phospho peptide.



Immunohistochemistry analysis of paraffin-embedded human breast carcinoma, using Elk1 (Phospho-Ser389) Antibody. The picture on the right is blocked with the phospho peptide.