

## Anti-Phospho-EGFR-Tyr1172 antibody (1139-1188 aa) (STJ90250)

### GENERAL INFORMATION

Product Type	Primary antibodies
Applications	WB/ELISA
Host / Source	Rabbit
Reactivity	Human/Mouse/Rat

### PRODUCT PROPERTIES

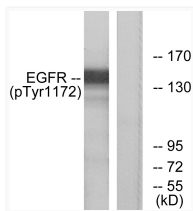
Clonality	Polyclonal
Concentration	1 mg/mL
Conjugation	Unconjugated
Purification	The antibody was affinity-purified from rabbit antiserum by affinity-chromatography using epitope-specific immunogen.
Dilution Range	WB 1:500-1:2000 ELISA 1:10000
Formulation	Liquid in PBS containing 50% Glycerol, 0.5% BSA and 0.02% Sodium Azide.
Isotype	IgG
Molecular Weight	Observed: 175kD
Storage Instruction	Store at -20°C for up to 1 year from the date of receipt, and avoid repeat freeze-thaw cycles.

### TARGET INFORMATION

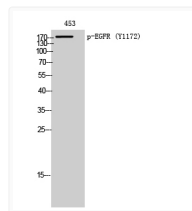
Gene ID	<a href="#">1956</a>
Gene Symbol	<a href="#">EGFR</a>
UniProt ID	<a href="#">EGFR_HUMAN</a>
Immunogen Region	1139-1188 aa
Specificity	Phospho-EGFR (Y1172) Polyclonal Antibody detects endogenous levels of EGFR protein only when phosphorylated at Y1172.

### ADDITIONAL INFORMATION

Note **STRICTLY FOR FURTHER SCIENTIFIC RESEARCH USE ONLY (RUO). MUST NOT TO BE USED IN DIAGNOSTIC OR THERAPEUTIC APPLICATIONS.**



Western blot analysis of lysates from A431 cells treated with EGF 40  $\mu$ M 10', using EGFR (Phospho-Tyr1172) Antibody. The lane on the right is blocked with the phospho peptide.



Western blot analysis of 453 cells using Phospho-EGFR (Y1172) Polyclonal Antibody diluted at 1:2000