

Anti-Phospho-CCNB1-Ser126 antibody (91-140 aa) (STJ90239)

GENERAL INFORMATION

| | |
|---------------|--------------------|
| Product Type | Primary antibodies |
| Applications | WB/IHC/IF/ELISA |
| Host / Source | Rabbit |
| Reactivity | Human/Mouse/Rat |

PRODUCT PROPERTIES

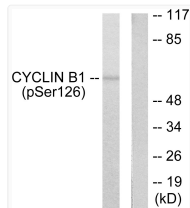
| | |
|---------------------|---|
| Clonality | Polyclonal |
| Concentration | 1 mg/mL |
| Conjugation | Unconjugated |
| Purification | The antibody was affinity-purified from rabbit antiserum by affinity-chromatography using epitope-specific immunogen. |
| Dilution Range | WB 1:500-1:2000 IHC 1:100-1:300 ELISA 1:5000 IF 1:50-200 |
| Formulation | Liquid in PBS containing 50% Glycerol, 0.5% BSA and 0.02% Sodium Azide. |
| Isotype | IgG |
| Molecular Weight | Observed: 60kD |
| Storage Instruction | Store at -20°C for up to 1 year from the date of receipt, and avoid repeat freeze-thaw cycles. |

TARGET INFORMATION

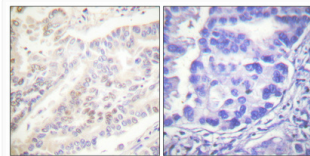
| | |
|------------------|---|
| Gene ID | 891 |
| Gene Symbol | CCNB1 |
| UniProt ID | CCNB1_HUMAN |
| Immunogen Region | 91-140 aa |
| Specificity | Phospho-Cyclin B1 (S126) Polyclonal Antibody detects endogenous levels of Cyclin B1 protein only when phosphorylated at S126. |

ADDITIONAL INFORMATION

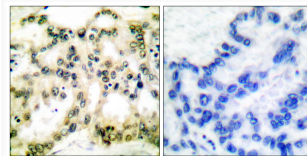
Note **STRICTLY FOR FURTHER SCIENTIFIC RESEARCH USE ONLY (RUO). MUST NOT TO BE USED IN DIAGNOSTIC OR THERAPEUTIC APPLICATIONS.**



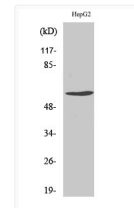
Western blot analysis of lysates from NIH/3T3 cells treated with EGF 200ng/ml 15', using Cyclin B1 (Phospho-Ser126) Antibody. The lane on the right is blocked with the phospho peptide.



Immunohistochemical analysis of paraffin-embedded Human lung cancer. Antibody was diluted at 1:100 (4°C overnight). High-pressure and temperature Tris-EDTA, pH8.0 was used for antigen retrieval. Negative contrl (right) obtained from antibody was pre-absorbed by immunogen peptide.



Immunohistochemistry analysis of paraffin-embedded human lung carcinoma, using Cyclin B1 (Phospho-Ser126) Antibody. The picture on the right is blocked with the phospho peptide.



Western blot analysis of various cells using Phospho-Cyclin B1 (S126) Polyclonal Antibody