

Anti-Phospho-CDK1-Tyr15 antibody (5-54 aa) (STJ90214)

GENERAL INFORMATION

Product Type	Primary antibodies
Applications	WB/ELISA
Host / Source	Rabbit
Reactivity	Human/Mouse/Rat/Monkey

PRODUCT PROPERTIES

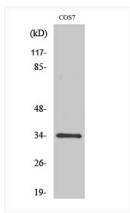
Clonality	Polyclonal
Concentration	1 mg/mL
Conjugation	Unconjugated
Purification	The antibody was affinity-purified from rabbit antiserum by affinity-chromatography using epitope-specific immunogen.
Dilution Range	WB 1:500-1:2000 ELISA 1:10000
Formulation	Liquid in PBS containing 50% Glycerol, 0.5% BSA and 0.02% Sodium Azide.
Isotype	IgG
Molecular Weight	Observed: 34kD
Storage Instruction	Store at -20°C for up to 1 year from the date of receipt, and avoid repeat freeze-thaw cycles.

TARGET INFORMATION

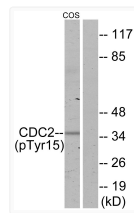
Gene ID	983
Gene Symbol	CDK1
UniProt ID	CDK1_HUMAN
Immunogen Region	5-54 aa
Specificity	Phospho-Cdc2 (Y15) Polyclonal Antibody detects endogenous levels of Cdc2 protein only when phosphorylated at Y15.

ADDITIONAL INFORMATION

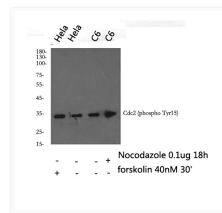
Note **STRICTLY FOR FURTHER SCIENTIFIC RESEARCH USE ONLY (RUO). MUST NOT TO BE USED IN DIAGNOSTIC OR THERAPEUTIC APPLICATIONS.**



Western blot analysis of various cells using Phospho-Cdc2 (Y15) Polyclonal Antibody



Western blot analysis of lysates from COS7 cells, using CDC2 (Phospho-Tyr15) Antibody. The lane on the right is blocked with the phospho peptide.



Western blot analysis of Cdc2 (phospho Tyr15) Polyclonal Antibody, using HeLa, C6 cell treated or untreated with forskolin 40nM 30', Nocodazole 0.1ug/ml 18hour, 4°C over night, secondary antibody was diluted at 1:10000, 37°C 1hour.