

## Anti-Phospho-CDK1-Thr161 antibody (131-180 aa) (STJ90213)

### GENERAL INFORMATION

Product Type	Primary antibodies
Applications	WB/IHC/IF/ELISA
Host / Source	Rabbit
Reactivity	Human/Mouse/Rat

### PRODUCT PROPERTIES

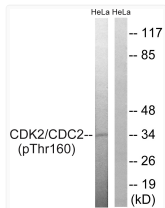
Clonality	Polyclonal
Concentration	1 mg/mL
Conjugation	Unconjugated
Purification	The antibody was affinity-purified from rabbit antiserum by affinity-chromatography using epitope-specific immunogen.
Dilution Range	WB 1:500-1:2000 IHC 1:100-1:300 ELISA 1:5000 IF 1:50-200
Formulation	Liquid in PBS containing 50% Glycerol, 0.5% BSA and 0.02% Sodium Azide.
Isotype	IgG
Molecular Weight	Observed: 34kD
Storage Instruction	Store at -20°C for up to 1 year from the date of receipt, and avoid repeat freeze-thaw cycles.

### TARGET INFORMATION

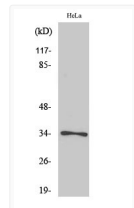
Gene ID	<a href="#">983</a>
Gene Symbol	<a href="#">CDK1</a>
UniProt ID	<a href="#">CDK1_HUMAN</a>
Immunogen Region	131-180 aa
Specificity	Phospho-Cdc2 (T161) Polyclonal Antibody detects endogenous levels of Cdc2 protein only when phosphorylated at T161.

### ADDITIONAL INFORMATION

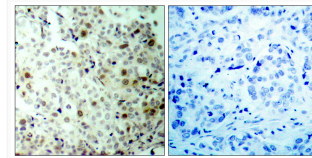
Note **STRICTLY FOR FURTHER SCIENTIFIC RESEARCH USE ONLY (RUO). MUST NOT TO BE USED IN DIAGNOSTIC OR THERAPEUTIC APPLICATIONS.**



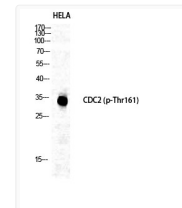
Western blot analysis of lysates from HeLa cells, using CDC2 (Phospho-Thr161) Antibody. The lane on the right is blocked with the phospho peptide.



Western blot analysis of HeLa cells using Phospho-Cdc2 (T161) Polyclonal Antibody diluted at 1 : 1000



Immunohistochemistry analysis of paraffin-embedded human breast carcinoma, using CDC2 (Phospho-Thr161) Antibody. The picture on the right is blocked with the phospho peptide.



Western blot analysis of various cells using Phospho-Cdc2 (T161) Polyclonal Antibody diluted at 1 : 1000