

## Anti-Phospho-BCL2L1-Thr47 antibody (13-62 aa) (STJ90195)

### GENERAL INFORMATION

Product Type	Primary antibodies
Applications	WB/IHC/IF/ELISA
Host / Source	Rabbit
Reactivity	Human/Mouse/Rat

### PRODUCT PROPERTIES

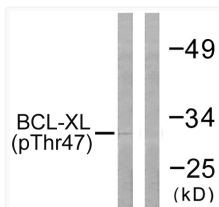
Clonality	Polyclonal
Concentration	1 mg/mL
Conjugation	Unconjugated
Purification	The antibody was affinity-purified from rabbit antiserum by affinity-chromatography using epitope-specific immunogen.
Dilution Range	WB 1:500-1:2000 IHC 1:100-1:300 IF 1:200-1:1000 ELISA 1:40000
Formulation	Liquid in PBS containing 50% Glycerol, 0.5% BSA and 0.02% Sodium Azide.
Isotype	IgG
Molecular Weight	Observed: 30kD
Storage Instruction	Store at -20°C for up to 1 year from the date of receipt, and avoid repeat freeze-thaw cycles.

### TARGET INFORMATION

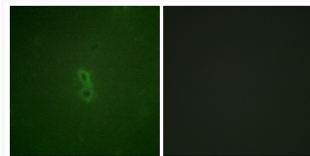
Gene ID	<a href="#">598</a>
Gene Symbol	<a href="#">BCL2L1</a>
UniProt ID	<a href="#">B2CL1_HUMAN</a>
Immunogen Region	13-62 aa
Specificity	Phospho-Bcl-x (T47) Polyclonal Antibody detects endogenous levels of Bcl-x protein only when phosphorylated at T47.

### ADDITIONAL INFORMATION

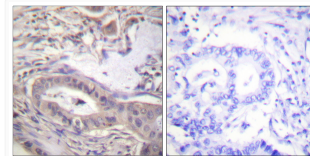
Note **STRICTLY FOR FURTHER SCIENTIFIC RESEARCH USE ONLY (RUO). MUST NOT TO BE USED IN DIAGNOSTIC OR THERAPEUTIC APPLICATIONS.**



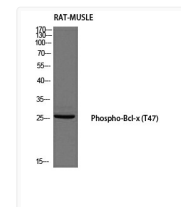
Western blot analysis of lysates from 293 cells treated with UV 30', using BCL-XL (Phospho-Thr47) Antibody. The lane on the right is blocked with the phospho peptide.



Immunofluorescence analysis of NIH/3T3 cells, using BCL-XL (Phospho-Thr47) Antibody. The picture on the right is blocked with the phospho peptide.



Immunohistochemistry analysis of paraffin-embedded human lung carcinoma, using BCL-XL (Phospho-Thr47) Antibody. The picture on the right is blocked with the phospho peptide.



Western blot analysis of RAT-MUSCLE using Phospho-Bcl-x (T47) antibody. Antibody was diluted at 1:500