

Anti-Phospho-BCL2L1-Ser62 antibody (28-77 aa) (STJ90194)

GENERAL INFORMATION

Product Type	Primary antibodies
Applications	WB/IHC/IF/ELISA
Host / Source	Rabbit
Reactivity	Human/Mouse/Rat

PRODUCT PROPERTIES

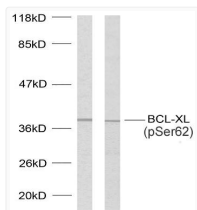
Clonality	Polyclonal
Concentration	1 mg/mL
Conjugation	Unconjugated
Purification	The antibody was affinity-purified from rabbit antiserum by affinity-chromatography using epitope-specific immunogen.
Dilution Range	WB 1:500-1:2000 IHC 1:100-1:300 ELISA 1:10000 IF 1:50-200
Formulation	Liquid in PBS containing 50% Glycerol, 0.5% BSA and 0.02% Sodium Azide.
Isotype	IgG
Molecular Weight	Calculated: 26kD
Storage Instruction	Store at -20°C for up to 1 year from the date of receipt, and avoid repeat freeze-thaw cycles.

TARGET INFORMATION

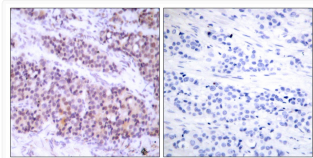
Gene ID	598
Gene Symbol	BCL2L1
UniProt ID	B2CL1_HUMAN
Immunogen Region	28-77 aa
Specificity	Phospho-Bcl-x (S62) Polyclonal Antibody detects endogenous levels of Bcl-x protein only when phosphorylated at S62.

ADDITIONAL INFORMATION

Note **STRICTLY FOR FURTHER SCIENTIFIC RESEARCH USE ONLY (RUO). MUST NOT TO BE USED IN DIAGNOSTIC OR THERAPEUTIC APPLICATIONS.**



Western blot analysis of lysates from 293 cells treated with UV and MDA-MB-435 cells treated with UV, using BCL-XL (Phospho-Ser62) Antibody.



Immunohistochemistry analysis of paraffin-embedded human breast carcinoma, using BCL-XL (Phospho-Ser62) Antibody. The picture on the right is blocked with the phospho peptide.